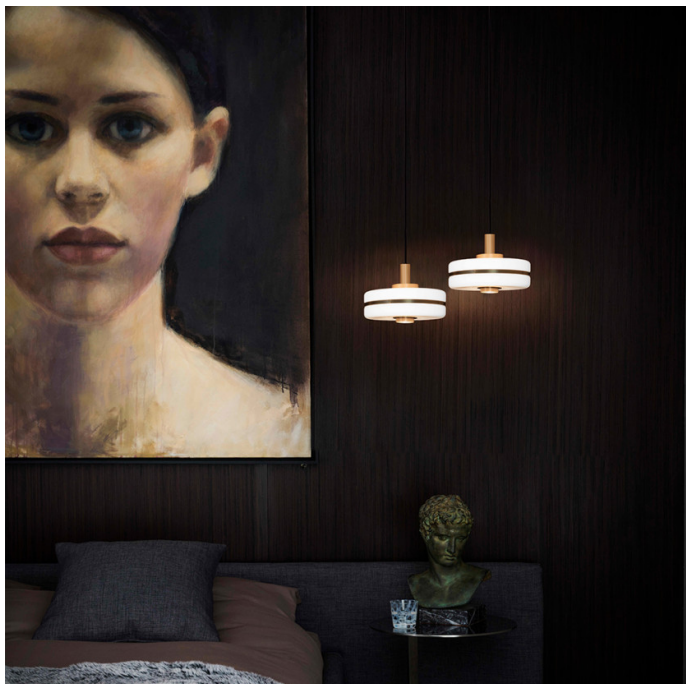


Bert Frank Masina Pendant

LA10801

SOURCE: <https://www.davidvillagelighting.co.uk/product/Bert-Frank-Masina-Pendant/10001071>



PRODUCT DESCRIPTION

Designer: Bert Frank Design Team

Bert Frank Masina Pendant

The Bert Frank Masina Pendant is an elegant and contemporary lighting solution, handcrafted in the heart of the industrial quarter in Birmingham, UK. Featuring an oversized opal glass shade with brass detailing, the Masina is effortlessly chic and produces a calming glow emitted downwards and spread evenly across your room. This makes it a perfect light for positioning in a central living area, over a bedside table or above a dining table to bring a warm glow of sophistication to your environment.

Bert Frank's Masina Pendant expertly combines traditional manufacturing with innovative technology, resulting in a light that can adapt to a large range of interiors and, thanks to the custom drop height, can be easily personalised to suit each consumer's space.

Please Note the Masina 200 and Masina 300 are supplied with a 2-metre flex cable that can be adjusted on-site. The Masina 400 is supplied with a brass rod.

PRODUCT SPECIFICATION

Light Source: **200:** 1 x Max 3W E14 (included)
300: 1 x Max 7W E14 (included)
400: 1 x Max 8.5W E27 (excluded)

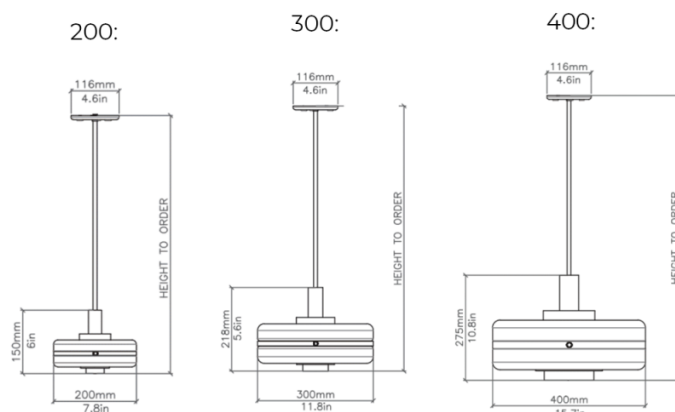
IP Code: 20

Dimming: Dimmable via mains phase dimming.

Dimensions: Masina 200:
 Shade: Ø20cm
 Maximum Cable Length: 200cm

Masina 300:
 Shade: Ø30cm
 Maximum Cable Length: 200cm

Masina 400:
 Shade: Ø40cm
 Rod Length: Specified upon ordering.





For all sales and technical enquiries, please contact:

+44 (0)114 263 4266

info@davidvillagelighting.co.uk

www.davidvillagelighting.co.uk