

**Tom  
Dixon.**  
LA6422/PORTABLE

## Tom Dixon Bell LED Portable Lamp

SOURCE: <https://www.davidvillagelighting.co.uk/product/Tom-Dixon-Bell-LED-Portable-Lamp/10001032>

### PRODUCT DESCRIPTION

**Designer:** Tom Dixon

## Tom Dixon Bell LED Portable Lamp

**Indigo and Moss finishes are now available to pre-order.  
Official Release Date: March 10th 2025.**



The new Tom Dixon Bell Portable Lamp is the epitome of reductionism, a beautiful and minimalistic lighting solution. The inspiration came from vintage cars, clearly represented in the curved shade of the Bell Portable LED Lamp, which encloses a frosted diffuser. The result is a soft light emission, directed downwards to illuminate your surface below. Thanks to the integrated dimmer, which is located on the base of the lamp, you can easily personalise the light output to suit your environment and generate the perfect ambience for your needs.

The reflective surface of the Tom Dixon Bell Portable allows the lamp to take on a chameleon-like effect, mirroring the characteristics of its surroundings. This makes it easy for the lamp to adapt to a range of contemporary settings. This portable lighting solution can be utilised in residential and commercial settings but is exceptionally stunning in larger spaces in the hospitality sector. For example, tables in restaurants and on countertops in bars.

**Operating Time: approx 7-9 hours**

**Charging Time: approx 5 hours**

**Please Note: Do not leave the Flouro finish in direct sunlight for prolonged periods as this will lead to colour fading on the product.**

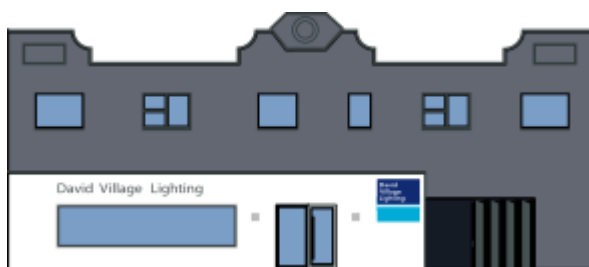
## PRODUCT SPECIFICATION

**Light Source:** 3W, 3000K, 160 Lumens

**IP Code:** 44

**Dimming:** Integrated dimmer on the product.

**Dimensions:** Height: 28cm  
Base: Ø19cm  
Charger Cable Length: 200cm



**For all sales and technical enquiries, please contact:**

+44 (0)114 263 4266

[info@davidvillagelighting.co.uk](mailto:info@davidvillagelighting.co.uk)

[www.davidvillagelighting.co.uk](http://www.davidvillagelighting.co.uk)