

**Tom
Dixon.**

LA5205/PORTABLE

Tom Dixon Stone LED Portable Lamp

SOURCE: <https://www.davidvillagelighting.co.uk/product/Tom-Dixon-Stone-LED-Portable-Lamp/10001029>

PRODUCT DESCRIPTION

Designer: Tom Dixon

Tom Dixon Stone LED Portable Lamp



The latest addition to the Tom Dixon Stone collection, this portable LED lamp is a tactile and durable lighting solution that can be manoeuvred from room to room. Stone is distinguished by its luxurious material and unique composition; it boasts a solid outer marble ring that appears to be floating around the light source, emitting a soft halo effect. The marble is cut as thin as possible to create a semi-translucent effect, emphasising the patterned surface and casting a high-quality illumination across the room. The circular fixture also assists in diffusing the LED light source and is also an integrated dimmer, in order to offer you full personalisation of the ambience in your room. The fixture can be tapped to adjust the light intensity to your desired setting and is available in either a brass or silver finish.

The Stone table lamp by Tom Dixon is the ideal contemporary lighting feature to add a touch of luxury to any environment. Stay on trend with the stylish combination of white marble and brass. The Tom Dixon Stone Portable is a gorgeous addition to both residential and commercial spaces; illuminate your bedroom, living area or kitchen in your home, or similarly utilise this lamp to create an inviting ambience in restaurants bars and hotels. The possibilities with the Stone Portable are endless.

Operating Time: approx 7-9 hours

Charging Time: approx 5 hours

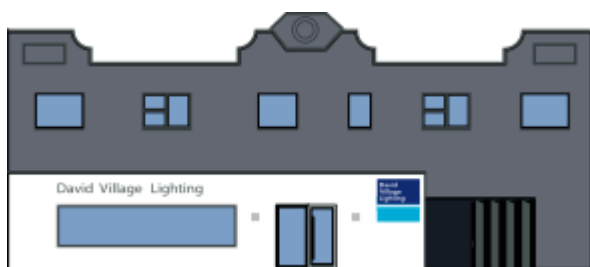
PRODUCT SPECIFICATION

Light Source: 3W, 3000K, 160 Lumens

IP Code: 20

Dimming: Integrated dimmer on the product.

Dimensions: Height: 19cm
Base: Ø16cm
Charger Cable Length: 200cm



For all sales and technical enquiries, please contact:

+44 (0)114 263 4266

info@davidvillagelighting.co.uk

www.davidvillagelighting.co.uk