

pholc

Pholc Kandinsky LED Pendant

LA10745/P

SOURCE: <https://www.davidvillagelighting.co.uk/product/Pholc-Kandinsky-LED-Pendant/10000939>



PRODUCT DESCRIPTION

Designer: Broberg & Ridderstråle

Pholc Kandinsky Pendant

Combining fragility and precision, the Kandinsky Pendant by [Pholc](#) casts a soft glow wherever it is situated. Inspired by the abstract circle paintings of its namesake; Wassily Kandinsky, the hand-blown glass pendant evokes drama in its setting, all whilst remaining delicate with a sense of weightlessness. Designed by Stockholm-based collaborators Broberg & Ridderstråle, Kandinsky was awarded Lamp of the Year by Residence Magazine 2019.

The brass spear that strikes through the glass sphere emits a diffused light that can be dimmed to suit any mood. The pendant can be heightened or lowered to fit the ambience. Whether it be over a dining table, as a design feature on its own or as a group, the fixture is adaptable to your home or professional setting.

PRODUCT SPECIFICATION

Light Source: **Small:** 5W, 2700K, 535 Lumens

Large: 7W, 2700K, 840 Lumens

IP Code: 20

Dimming: Dimmable using leading edge and trailing edge.

Dimensions: **Small:**

Ø30cm

Structure Height: 81.2cm

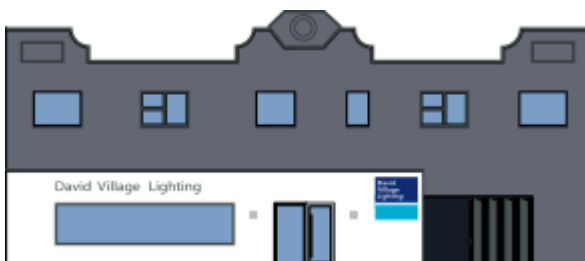
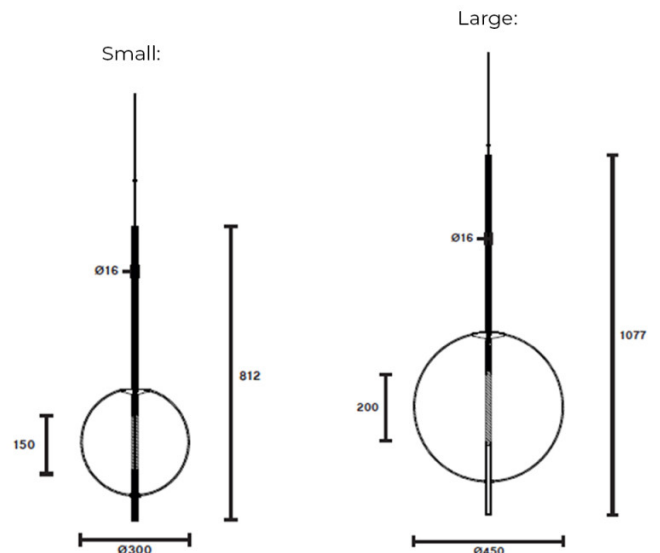
Max Cable Length: 300cm

Large:

Ø45cm

Structure Height: 107.7cm

Max Cable Length: 300cm



For all sales and technical enquiries, please contact:

+44 (0)114 263 4266

info@davidvillagelighting.co.uk

www.davidvillagelighting.co.uk