



Buster + Punch 1G Intermediate Toggle Switch

LA10430/1GIN

SOURCE: <https://www.davidvillagelighting.co.uk/product/Buster-Punch-1G-Intermediate-Toggle-Switch/10000910>

PRODUCT DESCRIPTION

Designer: Massimo Minale

Buster + Punch 1G Intermediate Toggle Switch

The 1G Intermediate Toggle switch is available in twelve stylish finishes and crafted with the same aesthetic as all Buster + Punch products. The Intermediate Toggle switch allows you to control numerous light sources from one fitting and can be paired with other B+P accessories in order to fully customise your home to your liking. Made of solid metal, the toggle has a cross-knurl pattern, adding to its elegant design, the back plate utilises the brand's iconic solid metal coin screws.

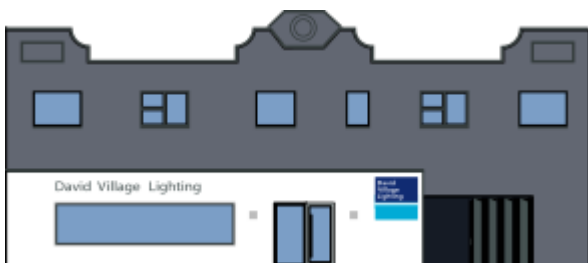
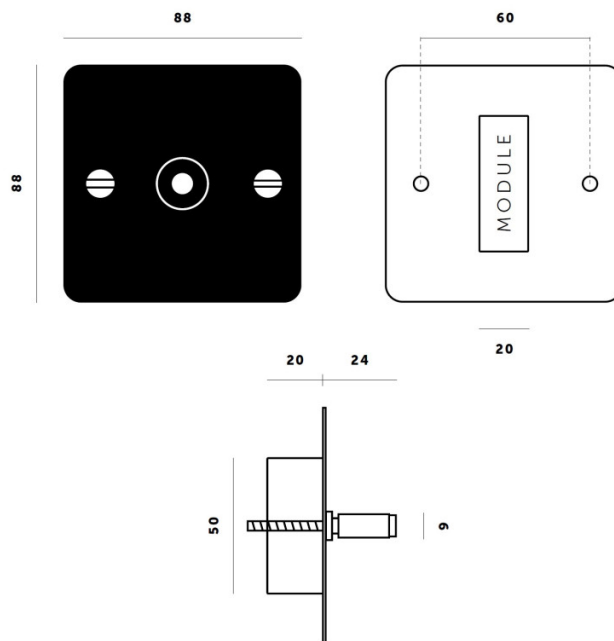


PRODUCT SPECIFICATION

Dimming: Single Switch, 3-way, 240V

Dimensions: Toggle: Ø6mm
 Height: 8.8cm
 Width: 8.8cm
 Depth: 2.4cm

Recommended Back Box:
 1G square back box - 47mm depth



For all sales and technical enquiries, please contact:

+44 (0)114 263 4266

info@davidvillagelighting.co.uk

www.davidvillagelighting.co.uk