



LA10737/CLAMP

Design For The People Angle Clamp Lamp

SOURCE: <https://www.davidvillagelighting.co.uk/product/Design-For-The-People-Angle-Clamp-Lamp/10000897>

PRODUCT DESCRIPTION

Designer: Maria Berntsen

Design For The People Angle Clamp Lamp

The Angle Clamp Lamp has practicality at the heart of its design and is ideal for brightening areas of your room in a creative way. The modern, minimalistic design can be easily moved around your home and thanks to the clamp feature it can be attached to areas such as shelving units, a table or anywhere that you think needs a little extra illumination.

The shade is attached via a magnet and is easily adjustable, the world is your oyster with this design. Focus the light source on your workspace for a functional task light in your office, or tilt the shade towards the ceiling for a more cosy ambience in your living room or bedroom. The Angle Clamp Lamp is a master of both direct and indirect light.

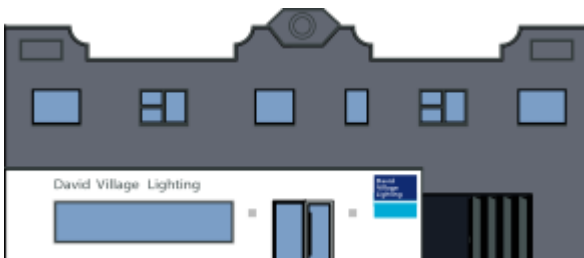
PRODUCT SPECIFICATION

Light Source: 1 x Max 15W GU10 (excluded)

IP Code: 20

Dimming: In line on/off switch included on cable.

Dimensions: Shade: Ø10cm
Height: 12.4cm
Cable Length: 180cm



For all sales and technical enquiries, please contact:

+44 (0)114 263 4266

info@davidvillagelighting.co.uk

www.davidvillagelighting.co.uk