



Design For The People Raito Wall Light

LA10735/WALL

SOURCE: <https://www.davidvillagelighting.co.uk/product/Design-For-The-People-Raito-Wall-Light/10000895>

PRODUCT DESCRIPTION

Designer: Bønnelycke MDD

Design For The People Raito Wall Light

A perfect example of modern simplicity, the Raito Wall Light was designed by Bønnelycke MDD for Design For The People. This light offers a timeless design, crafted from opal glass with brass details it produces a soft diffused light which is both glare free and undisturbed. If you are searching for a lighting solution with a decorative design and a comfortable light then the Raito Wall Light is for you.

This wall lamp also harbours the benefit of an integrated on/off switch on the wall bracket, this not only offers a functional and creative way to monitor the light output, but also saves space and ensures that whether you decide to hardwire this luminaire or not you still have easy access to the controls.

No matter where you decide to display this wall light it is sure to have an impact, but it is exceptionally stunning when displayed in your hallway, in the kitchen, next to your bed and even in the bathroom. (this wall light has an IP20 certification, so whilst it can be used in bathrooms please keep it a safe distance from water sources. See our information on bathroom zones [here](#).) It can also be a great addition to public spaces that benefit from a calming ambience, such as restaurants, cafes, hotel rooms and galleries.



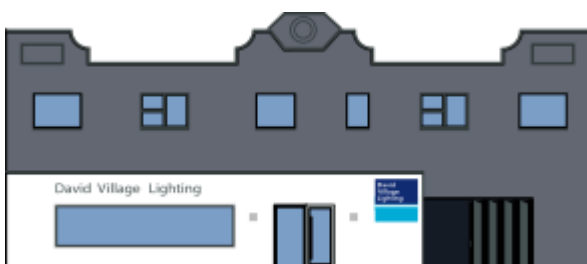
PRODUCT SPECIFICATION

Light Source: 1 x Max 115W E27 (excluded)

IP Code: 20

Dimming: Integrated on/off switch on the product.

Dimensions: Shade: Ø20cm
Full Height: 25.7cm
Depth: 25cm
Ceiling Canopy: Ø10cm
Cable Length: 180cm



For all sales and technical enquiries, please contact:

+44 (0)114 263 4266

info@davidvillagelighting.co.uk

www.davidvillagelighting.co.uk