

CLEARANCE  
OFFERS

LA7844/LE/SALE

## Marset FollowMe Black LED Limited Edition CLEARANCE

SOURCE: <https://www.davidvillagelighting.co.uk/product/marset-followme-black-led-limited-edition-clearance/10000882>

### PRODUCT DESCRIPTION

**Designer:** Inma Bermúdez

### FollowMe Black Limited Edition by Marset

**Brand new, in original packaging  
2 x Available.**

The Limited Edition FollowMe LED portable table lamp was designed by Inma Bermúdez and has become a design icon within a few short years. Being described as a '*daring pioneer of portable lighting*', the FollowMe is now available in a **limited edition black finish**.

This portable LED table lamp features a rocking opal diffuser that can be tilted to direct and diffuse the light source with ease and precision. This diffuser creates a **warm glowing light that can last up to 20 hours when fully charged**. With a USB and wall plug included, the rechargeable nature of the FollowMe portable light allows you to take a calming sleek lamp wherever you go. The **smooth oak veneer handle** invites you to hold and carry the light along with you, creating a cozy atmosphere and a personal object of light and warmth.

The limited-edition black finish is **one of Marset's most sophisticated colours** that outlines its shape, emphasizes its silhouette and creates a sharp contrast between the white shade and the frame. This refined and understated version of the [Marset FollowMe range](#) features a black natural oak veneer handle with **chrome detailing**. By simply pressing the chrome switch you are able to easily turn on the light and increase the lumen output. This bold portable lantern-style table lamp is perfect for homes, restaurants, or terraces that have no access to electrical outlets.

Read more about the FollowMe Black on our [Blog](#).



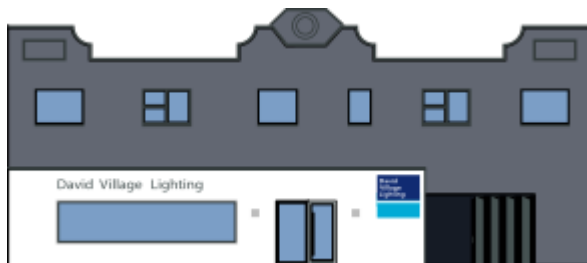
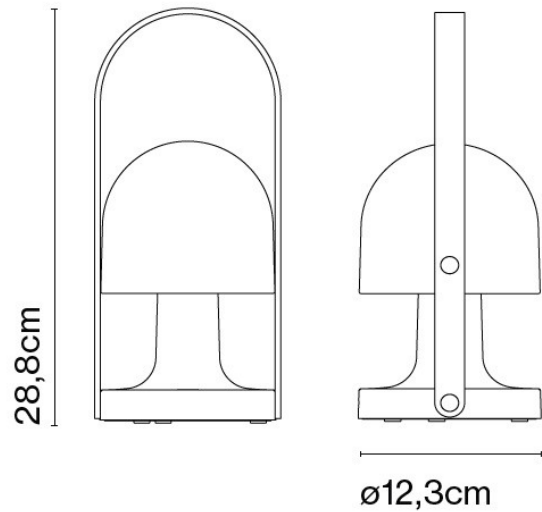
## PRODUCT SPECIFICATION

**Light Source:** 3.2W, 2700K, 240 lumens

**IP Code:** 20

**Dimming:** Integrated dimmer on the product

**Dimensions:** Ø12.3cm  
28.8 cm height



**For all sales and technical enquiries, please contact:**

+44 (0)114 263 4266

[info@davidvillagelighting.co.uk](mailto:info@davidvillagelighting.co.uk)

[www.davidvillagelighting.co.uk](http://www.davidvillagelighting.co.uk)