

FLOS

Flos Luce Orizzontale LED
Suspension

LA10676

SOURCE: <https://www.davidvillagelighting.co.uk/product/Flos-Luce-Orizzontale-LED-Suspension/10000758>



PRODUCT DESCRIPTION

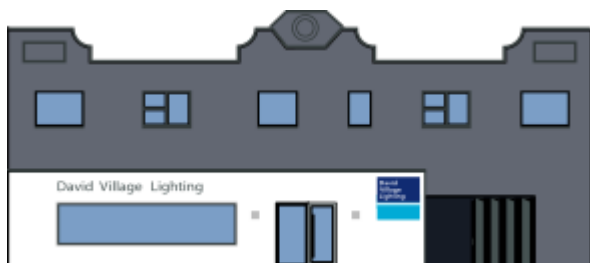
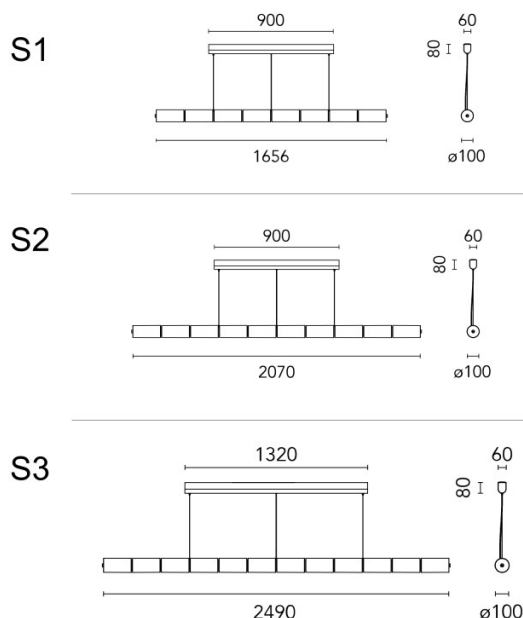
Designer: Ronan & Erwan Bouroullec

A stunning new light by Flos, the Luce Orizzontale combines craftsmanship and cutting-edge technology. Originally made for a bespoke project, the concept behind this light was to design an interlocking modular suspension with tubular glass elements, suspending from the ceiling. The ambitious design, by Ronan & Erwan Bouroullec, is more than sculptural. Each size, S1, S2 and S3 is comprised of 8, 10 or 12 glass tubes, all supported by an aluminium bar. Two LED strips are inserted into the bar and are pushing the light upwards and downwards through the glass.

Luce Orizzontale can be dimmed by various methods; either use the dimmer located at one end of the bar, or you can additionally connect the suspension via Push-To-Make or DALI dimming systems. The LED Strips emit a powerful light from 100W up to 175W on the bigger size. Its length ranges from 1.65m up to 2.40m, the Luce Orizzontale suspension is bound to catch the eye in any space.

PRODUCT SPECIFICATION

- Light Source:** S1 - 100W, 2700K, 4500 lumens
S2 - 145W, 2700K, 5750 lumens
S3 - 165W, 2700K, 7000 lumens
- IP Code:** 20
- Dimming:** Dimmable via Push, DALI or direct touch control. Please consult an electrician, additional wiring may be required on site.
- Dimensions:** S1 - 165.6cm width, 90x6x8cm ceil.canopy width
S2 - 207.2cm width, 90x6x8cm ceil.canopy width
S3 - 248.8cm width, 132x6x8cm ceil.canopy width
- Ø10 cm glass modules
270 cm cable length



For all sales and technical enquiries, please contact:

+44 (0)114 263 4266

info@davidvillagelighting.co.uk

www.davidvillagelighting.co.uk