

FLOS

Flos To-Tie LED Table Lamp

LA10672

SOURCE: <https://www.davidvillagelighting.co.uk/product/Flos-To-Tie-LED-Table-Lamp/10000746>



PRODUCT DESCRIPTION

Designer: Guglielmo Poletti

Flos To-Tie LED Table Lamp

Available in three sizes to choose from, the To-Tie is Guglielmo Poletti's first design for Flos. Poletti has used borosilicate glass for the body and aluminium for its handle, which also houses the LED source. A minimalistic lamp stripped down to the bare minimum; the To-Tie becomes a decorative piece even when not in use. To-Tie, meaning to fasten, can be carried around by the bar, easily changing its position.

To-Tie is available in T1, T2 and T3 sizes with an anodised black handle. The dimmer, located on the lamp's cable, allows you to easily adjust the light intensity. As with other Flos products, part of Flos For Planet initiative, no glue was used to assemble the product and therefore the To-Tie can be separated, and any parts easily replaced as well as recycled.

PRODUCT SPECIFICATION

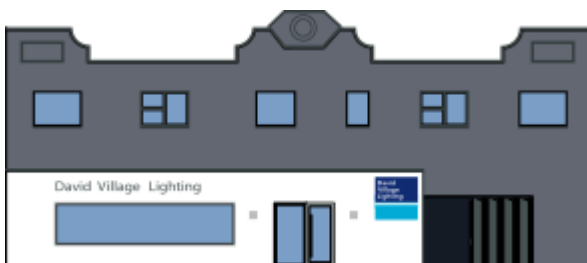
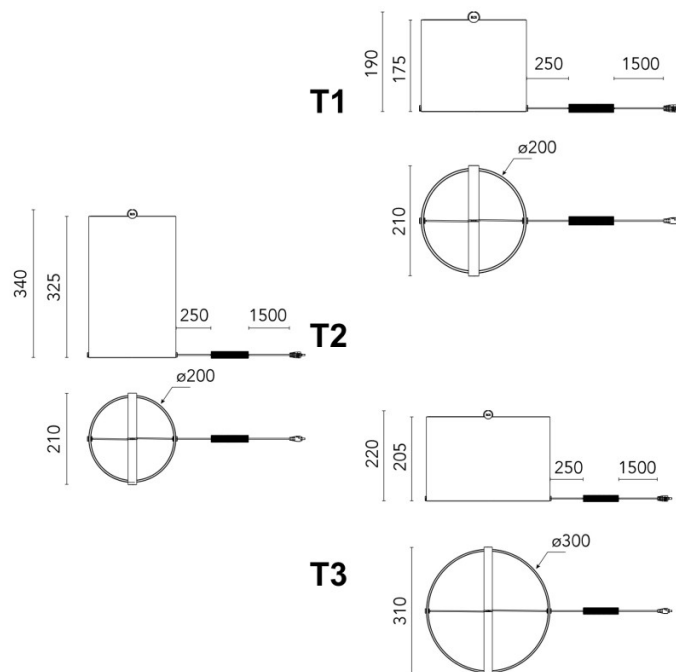
Light Source: To-Tie T1 - 7W, 2700K, 314 lumens
 To-Tie T2 - 7W, 2700K, 336 lumens
 To-Tie T3 - 10W, 2700K, 495 lumens

IP Code: 20

Dimming: In-line dimmer included on cable.

Dimensions: To-Tie T1 - Ø21 cm, 19 cm height
 To-Tie T2 - Ø21 cm, 34 cm height
 To-Tie T3 - Ø31 cm, 22 cm height

180 cm cable length



For all sales and technical enquiries, please contact:

+44 (0)114 263 4266

info@davidvillagelighting.co.uk

www.davidvillagelighting.co.uk