

**Tom
Dixon.**

LA4891/LED

Tom Dixon Copper Wide LED Pendant

SOURCE: <https://www.davidvillagelighting.co.uk/product/Tom-Dixon-Copper-Wide-LED-Pendant/10000716>



PRODUCT DESCRIPTION

Designer: Tom Dixon

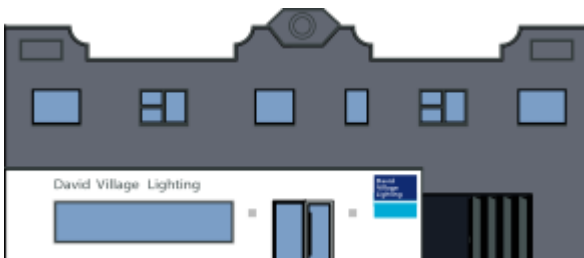
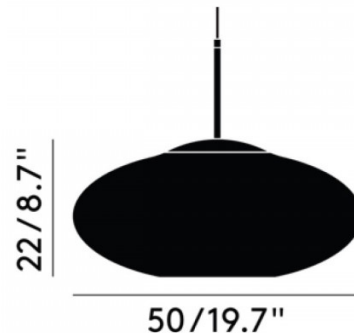
Copper Wide LED Pendant Light by Tom Dixon

The Copper Wide pendant is part of the [Tom Dixon Copper collection](#), a bestselling collection from the British brand. The lampshade is made from an interesting process, where a thin layer of metal is burst onto a polycarbonate globe. The lampshade exhibits a beautiful elliptical silhouette which is both familiar yet reinterpreted with a contemporary material finish.

The Copper Wide pendant lamp comes with an integrated LED light source, ensuring for a long-life and effective illumination. The light source is concealed by the shade and has an opening in the bottom for a downward directed glow, perfect for hanging over tables and surfaces. The highly reflective surface also draws in the surrounding, creating a mesmerising and showstopping effect.

PRODUCT SPECIFICATION

- Light Source:** 6W, 3000K, 800 Lumens
- IP Code:** 20
- Dimming:** Dimmable via mains phase dimming.
- Dimensions:** Ø50cm
Height: 22cm
Ceiling Canopy: Ø11.5cm
Cable Length: 250cm



For all sales and technical enquiries, please contact:

+44 (0)114 263 4266

info@davidvillagelighting.co.uk

www.davidvillagelighting.co.uk