

# Ferm Living Speckle Pendant

LA10655

SOURCE: <https://www.davidvillagelighting.co.uk/product/Ferm-Living-Speckle-Pendant/10000707>



## PRODUCT DESCRIPTION

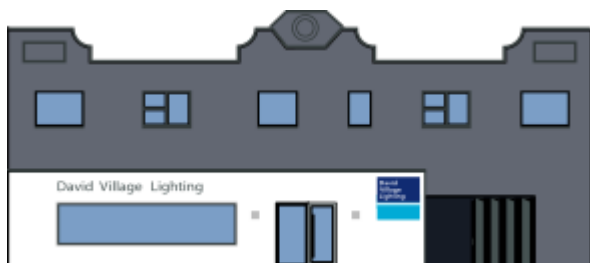
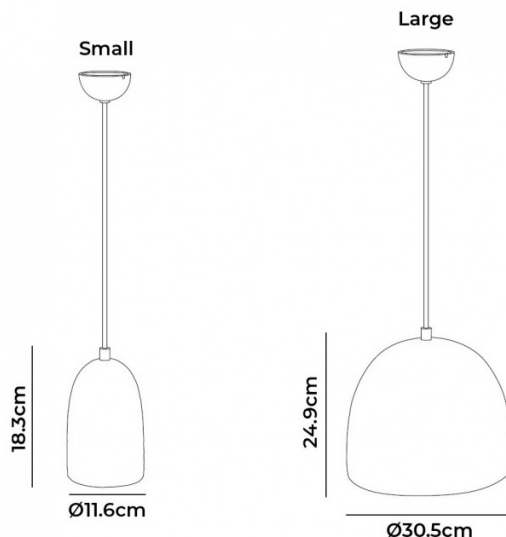
### Speckle Pendant Light by Ferm Living

The Speckle pendant is a gorgeously simple light that features a smooth and round silhouette. Crafted by hand, the lampshade is made from ceramic which has a raw and textured quality, adding a natural touch to any interior. The included ceiling canopy is also finished with the same ceramic, creating a unified design and organic aesthetic.

The Speckle pendant lamp is available in a small or large size and emits a downward directed glow, perfect for use over tables, kitchen islands and surfaces. The pendant light can be used alone, in rows or you can mix and match sizes to create a showstopping cluster feature. With an off-white finish, the Speckle pendant light will look at home in modern and traditional spaces due to its timeless design and pure material.

## PRODUCT SPECIFICATION

- Light Source:** 1 x max 12W E27 LED (excluded)
- IP Code:** 20
- Dimming:** Dimmable via mains phase dimming
- Dimensions:** **Small** - Ø11.6cm, H 18.3cm  
**Large** - Ø30.5cm, H 24.9cm
- 350cm cable length



For all sales and technical enquiries, please contact:

+44 (0)114 263 4266

info@davidvillagelighting.co.uk

www.davidvillagelighting.co.uk