

MAGIS

Magis Lost LED Pendant Light

LA10653/P

SOURCE: <https://www.davidvillagelighting.co.uk/product/Magis-Lost-LED-Pendant-Light/10000702>



PRODUCT DESCRIPTION

Designer: BrogliatoTraverso

Lost LED Pendant Light by Magis

The Lost pendant lamp was designed by Alberto Brogliato and Federico Traverso, a design duo who founded the BrogliatoTraverso studio in 2014. The pair have a unique design approach called "no time, no space," which signifies their aim for producing objects that can exist in any space or time. The Lost pendant exhibits this approach, as it features a simple round shade with a central void that acts to frame any space it is put in.

The Lost pendant comes in a small or large size and has a flexible LED source which wraps around the outside of the shade. This produces an intriguing and efficient glow that can be used as a main light in smaller spaces or for accent lighting in larger spaces. Use in homes, commercial settings, offices and more for a contemporary and ground-breaking light technology.

PRODUCT SPECIFICATION

Light Source: **Small** - 9W, 3000K, 1200 lumens
Large - 30W, 3000K, 5000 lumens

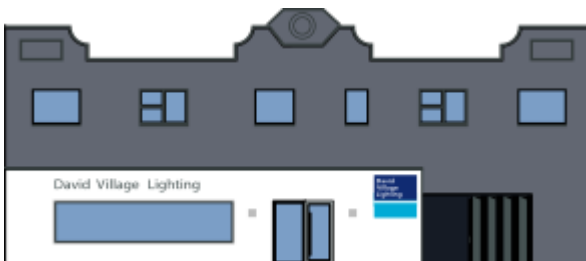
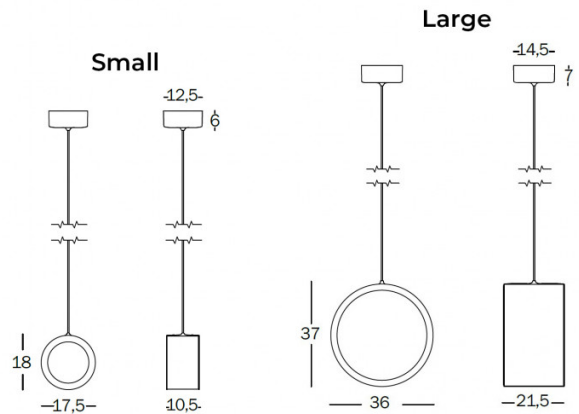
IP Code: 20

Dimming: Non-dimmable

Dimensions: **Small:**
 Ø17.5cm shade
 18cm height
 Ø12.5cm ceiling canopy

Large:
 Ø36cm shade
 37cm height
 Ø14.5cm ceiling canopy

400cm cable length



For all sales and technical enquiries, please contact:

+44 (0)114 263 4266

info@davidvillagelighting.co.uk

www.davidvillagelighting.co.uk