

**NEMO**

**Nemo Lighting Fox LED Wall Light**

LA10372/W

SOURCE: <https://www.davidvillagelighting.co.uk/product/Nemo-Lighting-Fox-LED-Wall-Light/10000618>



**PRODUCT DESCRIPTION**

**Designer:** Bernard Osann

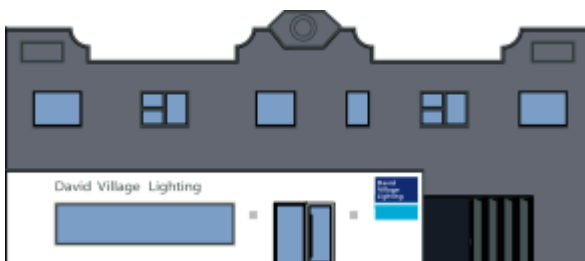
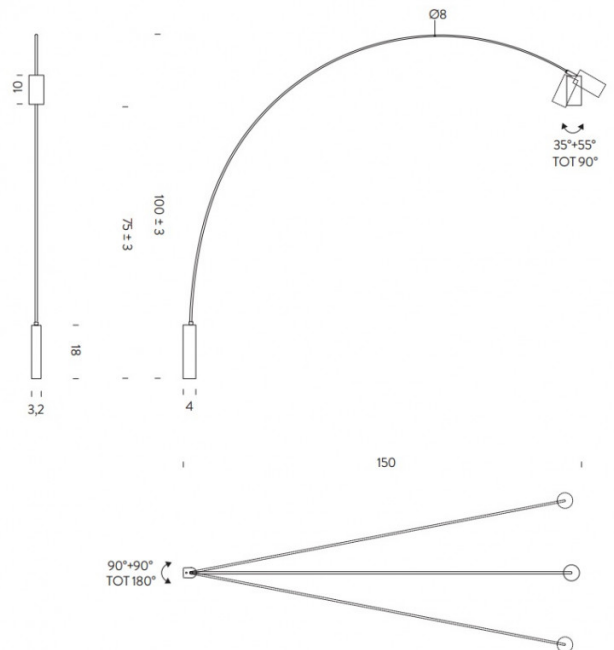
**Nemo Lighting Fox LED Wall Light**

The Nemo Lighting Fox wall light is a minimalist but modern design that features a small honeycomb filtered spotlight on a long flexible steel arm that is attached to the wall. This design is simple and can be placed above a desk space, dining area, or a cosy corner of your home that needs a touch of atmosphere. The Fox collection by Nemo Lighting is timeless and with its sleek black steel finish it can add luxury to any space.

The overarching steel arm is an impressive design feature that gives you an overhead light from a wall lamp. The bright and glare-free spotlight features a honeycomb aluminium filter that keeps the light bright and direct without adding glare to your home or commercial space.

**PRODUCT SPECIFICATION**

- Light Source:** 15W, 2700K, 839 lumens
- IP Code:** 20
- Dimming:** Integrated dimmer on the product.
- Dimensions:** 4cm base depth  
3.2cm base width  
18cm base height  
100cm height  
10cm shade length  
150cm depth from wall  
350cm cable length



**For all sales and technical enquiries, please contact:**

+44 (0)114 263 4266

info@davidvillagelighting.co.uk

www.davidvillagelighting.co.uk