



# Bover Nans Sphere Outdoor LED Pendant

LA10595/SP

SOURCE: <https://www.davidvillagelighting.co.uk/product/Bover-Nans-Sphere-Outdoor-LED-Pendant/10000602>



## PRODUCT DESCRIPTION

Designer: Joana Bover

## Bover Nans Sphere Outdoor LED Pendant Light

Designed by Joana Bover, the Nans Sphere outdoor pendant is part of the [Bover Nans collection](#), a range inspired by the Cala Nans cove situated in Cadaquès, a natural and untamed place that is only accessible by sea or footpath. Bover embodies this organic wonder with a natural looking lampshade, made from woven synthetic fibre to create a truly Mediterranean style.

The Nans Sphere outdoor pendant lamp can be used in a wide variety of exteriors, having an evenly-spread and downward directed glow to create a warm ambience. The pendant comes in two colours, red or brown, and in two sizes so you can find the right look and size for your space.

## PRODUCT SPECIFICATION

**Light Source:** Nans Sphere S/60: 14W, 2700K, 1400 Lumens  
Nans Sphere S/80: 24W, 2700K, 2400 Lumens

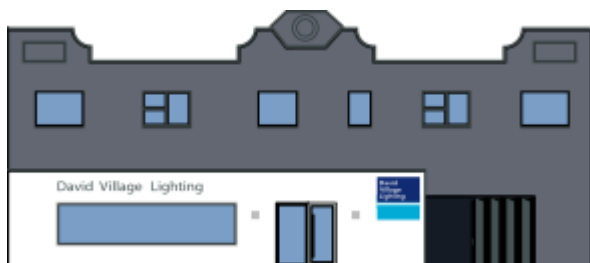
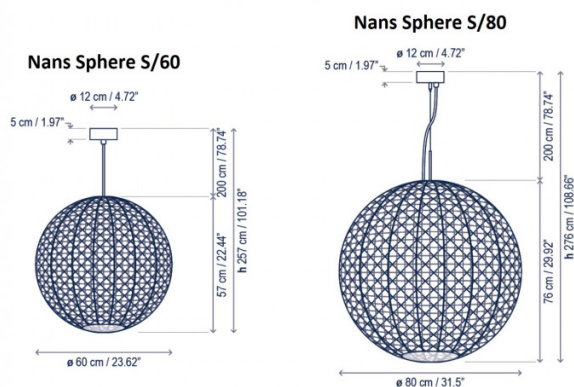
**IP Code:** 66

**Dimming:** Dimmable via Triac dimming.

**Dimensions:** Nans Sphere S/60  
Ø60cm  
Height: 57cm

Nans Sphere S/80  
Ø80cm  
Height: 76cm

Ceiling Canopy: Ø12cm  
Cable Length: 200cm



For all sales and technical enquiries, please contact:

+44 (0)114 263 4266

info@davidvillagelighting.co.uk

www.davidvillagelighting.co.uk