

estiluz[®]

Estiluz Cupolina LED Pendant

LA10590/P

SOURCE: <https://www.davidvillagelighting.co.uk/product/Estiluz-Cupolina-LED-Pendant/10000562>



PRODUCT DESCRIPTION

Designer: Boti de Dominicis Studio

Cupolina LED Pendant Light by Estiluz

The Cupolina pendant is part of the [Estiluz Cupolina collection](#) designed by Boti de Dominicis Studio. A minimalist and stylish light, the pendant has a domed lampshade which produces a downward directed glow, perfect for hanging over tables and surfaces.

The Cupolina pendant lamp is available in a white, terracotta or black colour finish and is made from metal for a chic aesthetic. The integrated LED light source is also very effective and lasts a long time for an efficient illumination. Use in a wide variety of settings such as kitchens, lounges, dining areas, offices and more.

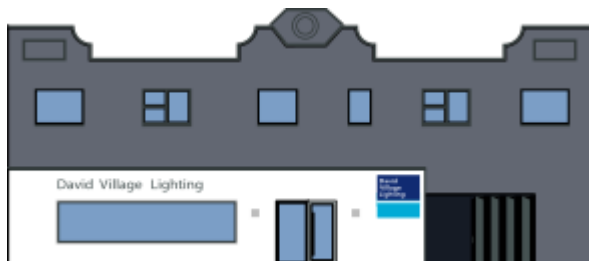
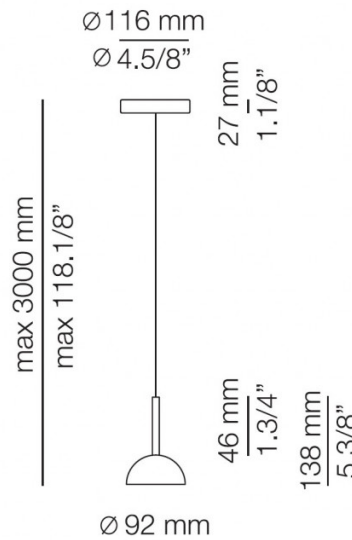
PRODUCT SPECIFICATION

Light Source: 6.2W, 2700K, 725 Lumens

IP Code: 20

Dimming: Non-dimmable.

Dimensions: Shade: Ø9.2cm
Shade Height: 13.8cm
Ceiling Canopy: Ø11.6cm
Maximum Drop: 300cm



For all sales and technical enquiries, please contact:

+44 (0)114 263 4266

info@davidvillagelighting.co.uk

www.davidvillagelighting.co.uk