

estiluz[®]

Estiluz Cupolina LED Table Lamp

LA10590/T

SOURCE: <https://www.davidvillagelighting.co.uk/product/Estiluz-Cupolina-LED-Table-Lamp/10000561>

PRODUCT DESCRIPTION

Designer: Boti de Dominicis Studio

Cupolina LED Table Lamp by Estiluz

Designed by design duo Boti de Dominicis Studio, the Cupolina table lamp is a simplistic and modern light. Made from metal, the table light features a rectangular structure and a lampshade which is suspended in the middle of the body. This creates an interesting aesthetic in interiors as the surroundings are framed by the lamp, presenting a focal point in a room.

The Cupolina table light is available in black or terracotta and has an integrated LED light source that is effective and long lasting. Use in homes or professional settings for a stylish look and atmospheric lighting.



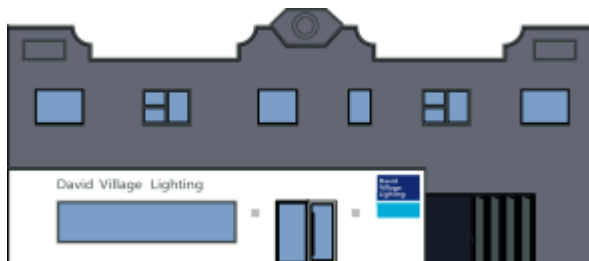
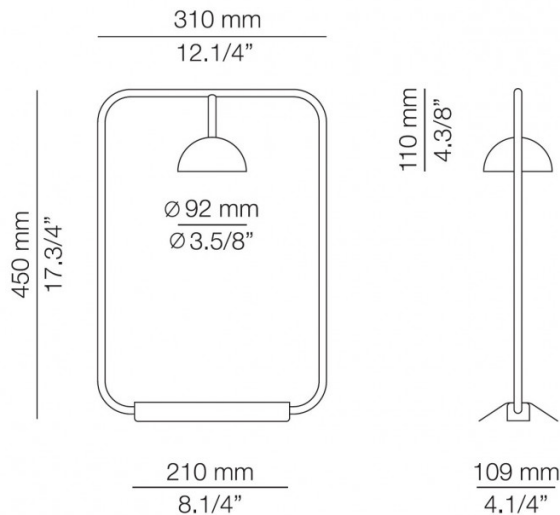
PRODUCT SPECIFICATION

Light Source: 6.2W, 2700K, 725 Lumens

IP Code: 20

Dimming: In line on/off switch included on cable.

Dimensions: Shade: Ø9.2cm
Shade Height: 11cm
Height: 45cm
Width: 31cm
Base Width: 21cm
Depth: 10.9cm



For all sales and technical enquiries, please contact:

+44 (0)114 263 4266

info@davidvillagelighting.co.uk

www.davidvillagelighting.co.uk