

estiluz[®]

Estiluz Cupolina LED Wall Light

LA10590

SOURCE: <https://www.davidvillagelighting.co.uk/product/Estiluz-Cupolina-LED-Wall-Light/10000556>

PRODUCT DESCRIPTION

Designer: Boti de Dominicis Studio

Cupolina LED Wall Light by Estiluz

The Cupolina wall light was designed by the Boti de Dominicis Studio, a design duo which seek to create unique and timeless pieces through deep technical development. This wall lamp provides an exceptional aesthetic, equipped with a shelf and made from a metal frame for a modern and sleek look. The integrated LED light source sits in the lampshade, concealed by an acrylic lens diffuser to produce a warm and anti-glare glow.

Available in a black, terracotta or white finish, the Cupolina wall lamp is wonderful for use in bedrooms, lounges and living spaces, providing a handy surface and a useful light for your space. The minimalist nature of the wall lamp and the subtle colours makes this light truly versatile and can be used in many different settings from homes to offices.



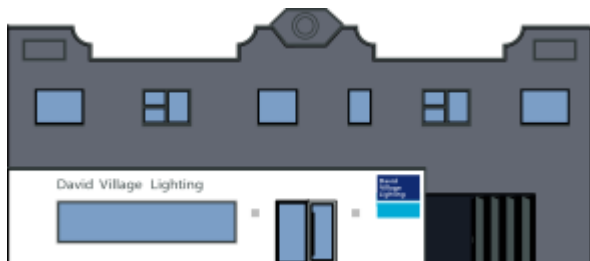
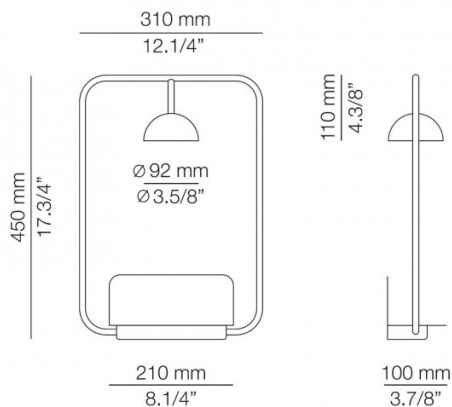
PRODUCT SPECIFICATION

Light Source: 6.2W, 2700K, 725 Lumens

IP Code: 20

Dimming: Non-dimmable.

Dimensions: Shade: Ø9.2cm
Shelf Width: 21cm
Height: 45cm
Width: 31cm
Depth from Wall: 10cm



For all sales and technical enquiries, please contact:

+44 (0)114 263 4266

info@davidvillagelighting.co.uk

www.davidvillagelighting.co.uk