



Estiluz Revolta LED Pendant

LA10587/P

SOURCE: <https://www.davidvillagelighting.co.uk/product/Estiluz-Revolta-LED-Pendant/10000550>



PRODUCT DESCRIPTION

Designer: Nahrang Studio

Revolta LED Pendant Light by Estiluz

Designed by Nahrang Studio, the Revolta pendant is a contemporary and stylish light, defined by its geometric design and minimalist look. The pendant light is made from a metal structure and features a slimline decorative circle which elegantly holds a small pendant spotlight that directs the light flow downwards.

The Revolta pendant lamp comes in two sizes, the small 3635 and the large 3636, with the 3635 featuring one light and the 3636 featuring two lights. The lampshade of the pendant is available in either a black or satin gold colour finish, with both being a sophisticated choice for any space. The Revolta suspension is best used for hanging over tables and surfaces, thriving in kitchens and dining areas for a chic and modern solution.

PRODUCT SPECIFICATION

Light Source: 6.2W, 2700K, 725 Lumens

IP Code: 20

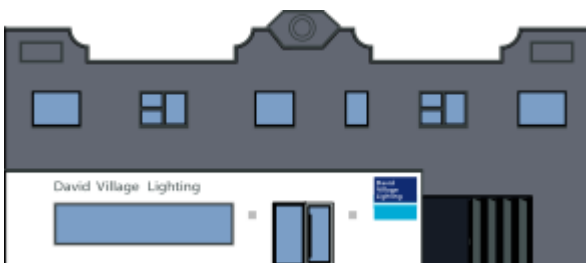
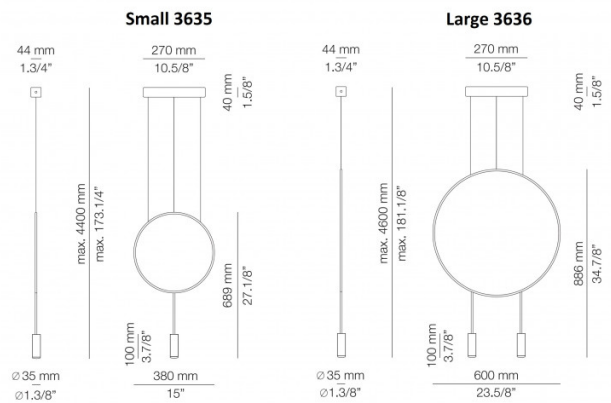
Dimming: Dimmable via Triac dimming.

Dimensions: Small 3635:

- Shade: Ø3.5cm
- Shade Height: 10cm
- Circle: Ø38cm
- Height: 68.6cm
- Ceiling Canopy Length: 27cm
- Maximum Drop: 440cm

Large 3636:

- Shade: Ø3.5cm
- Shade Height: 10cm
- Circle: Ø60cm
- Height: 88.6cm
- Ceiling Canopy Length: 27cm
- Maximum Drop: 460cm



For all sales and technical enquiries, please contact:

+44 (0)114 263 4266

info@davidvillagelighting.co.uk

www.davidvillagelighting.co.uk