



LA10585

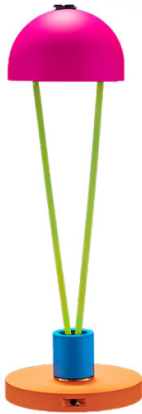
# Catellani & Smith Ale BE T LED Portable Table Lamp

SOURCE: <https://www.davidvillagelighting.co.uk/product/Catellani-Smith-Ale-BE-T-LED-Portable-Table-Lamp/10000540>

## PRODUCT DESCRIPTION

**Designer:** Enzo Catellani

### Catellani & Smith Ale BE T LED Portable Table Lamp



Designed by Enzo Catellani, the Ale BE T table lamp brings a stunning pop of bold colour to an interior. The design uses a unique colour palette and geometric shaping to form a statement piece that will be the talking point of any room. This Catellani & Smith table lamp features an iron hemispherical shade that is held up by two stunning aluminium tubes. This simplistic design creates a unique silhouette that brings together the straight lines of the tubes and the soft dome of the shade. This dome-shaped shade also allows you to tilt and adjust the angle of the beam. Located on the base is a retro-style on/off switch that can be flicked simply on and off with ease. This fun design is finished off with a characterful metallic fly detail resting on the top of the iron shade. This detail carries through as a feature on the whole Ale collection.

The Ale BE T Table lamp houses a battery in the base that allows you to charge and recharge the lamp using the included USB cable. With this cordless design, the Ale BE T is a portable lamp able to be placed wherever style and light are needed. Ideal for a decorative shelf, stylish bedside lamp or as a unique touch to a desk or workspace. Available in four stunning finishes, black, white, colourful and fluo, the Ale BE T portable table lamp can bring a pop of bold colour or a touch of classic monochrome to your home.

**Ph. credits:** Nava Rapacchietta

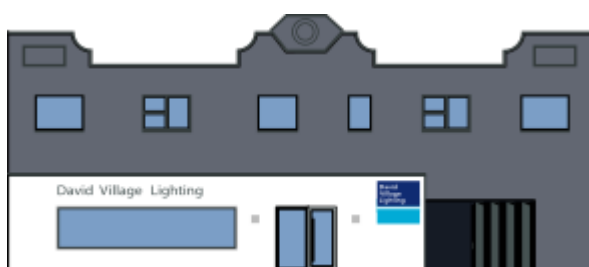
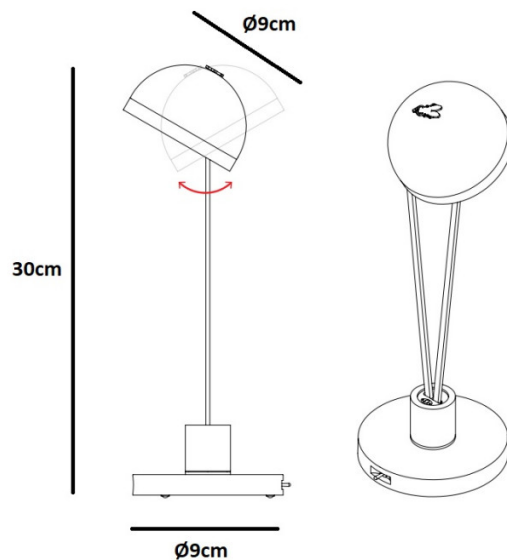
## PRODUCT SPECIFICATION

**Light Source:** 1.5W, 2700K, 219 Lumens

**IP Code:** 20

**Dimming:** Integrated on/off switch on the product.

**Dimensions:** Height: 30cm  
Shade: Ø9cm  
Base: Ø11cm



**For all sales and technical enquiries, please contact:**

+44 (0)114 263 4266

[info@davidvillagelighting.co.uk](mailto:info@davidvillagelighting.co.uk)

[www.davidvillagelighting.co.uk](http://www.davidvillagelighting.co.uk)