

MUUTO

Muuto Linear Steel Armchair

LA10570/A

SOURCE: <https://www.davidvillagelighting.co.uk/product/Muuto-Linear-Steel-Armchair/10000490>

PRODUCT DESCRIPTION

Designer: Thomas Bentzen

Muuto Linear Steel Armchair

Danish designer Thomas Bentzen created the Linear Steel collection for Muuto. Characterised by clean straight lines and comfort, the Linear Steel armchair is a modern take on outdoor furniture. The curved backrest, contrasting with the straight lines and folded armrest add to its unique, organic form. The armchair can be stacked, for easier storage.

The armchair is available in five colour options: burnt-orange, dark green, black, pale blue and grey. The entire Linear Steel collection is available in those finishes allowing you to create a stunning effect in your home. Suitable for both indoor and outdoor use, the Linear Steel armchair is the perfect solution for gardens, patios or balconies. Pair up with any of the side chairs and tables and create a beautiful seating arrangement.



PRODUCT SPECIFICATION

Dimensions: Width: 55.4cm
Depth: 54cm
Seat Height: 46cm
Full Height: 85.1cm



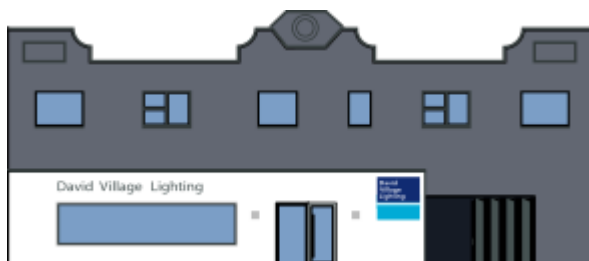
55,4 cm / 21.8"



54 cm / 21.3"

65,8 cm / 25.9"

85,1 cm / 33.5"
SH 46 cm / 18.1"



For all sales and technical enquiries, please contact:

+44 (0)114 263 4266

info@davidvillagelighting.co.uk

www.davidvillagelighting.co.uk