

pholc

# Pholc Donna Wall Light

LA10562/W

SOURCE: <https://www.davidvillagelighting.co.uk/product/Pholc-Donna-Wall-Light/10000466>

## PRODUCT DESCRIPTION

**Designer:** Nina Jobs & Stina Sandwall

### Donna Wall Light by Pholc

A part of the [Pholc Donna collection](#), the Donna wall lamp is a minimalist and contemporary fixture that can be used in a wide variety of interiors. Designers Nina Jobs and Stina Sandwall wanted to create a light that could emulate a soft fabric using a hard material. This wall light succeeds in that task, as it is made out of aluminium yet resembles the soft and cushioned effect of textiles often found in high fashion.

The Donna wall light is available in seven colours with the choice between colourful pastel finishes blush, autumn leaves and amber green or the more subtle finishes of black ink, linen, midnight blue and chestnut. The wall light emits an upward glow that reflects off the wall to create a soothing ambience, perfect for lining the walls of corridors, lounges, dining spaces, hallways and much more.



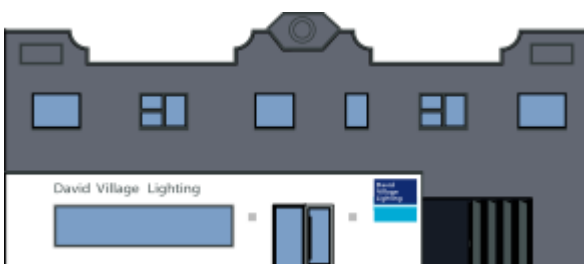
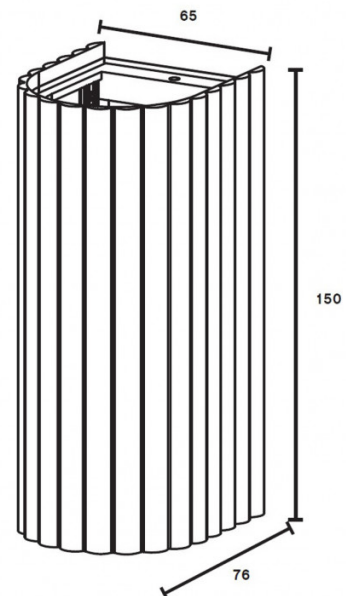
## PRODUCT SPECIFICATION

**Light Source:** 1 x Max 10W LED GU10 (excluded)

**IP Code:** 20

**Dimming:** Dimmable via mains phase dimming.

**Dimensions:** Width: 6.5cm  
Height: 15cm  
Depth: 7.6cm



**For all sales and technical enquiries, please contact:**

+44 (0)114 263 4266

[info@davidvillagelighting.co.uk](mailto:info@davidvillagelighting.co.uk)

[www.davidvillagelighting.co.uk](http://www.davidvillagelighting.co.uk)