

**normann**  
COPENHAGEN

## Normann Copenhagen Amp Wall Light

LA5432/W

SOURCE: <https://www.davidvillagelighting.co.uk/product/Normann-Copenhagen-Amp-Wall-Light/10000459>

### PRODUCT DESCRIPTION

**Designer:** Simon Legald

### Normann Copenhagen Amp Wall Light

Normann Copenhagen Amp Wall Light was designed by Simon Legald. Amp Wall Light was inspired by vintage tube amplifiers from the 1960s as part of the [Amp collection](#). Featuring a tubular glass lampshade that exposes the light bulb, the Amp Wall Light emits a downward glow for a contemporary and modern look. The metal arm gracefully bends down holding a marble fitting on top of the shade which adds an interesting aspect.

The Amp wall light is available in two colourway options: black/smoke and gold/green. Amp Wall Light can be displayed in both a residential and commercial environment such as hallways, corridors, lounges, bedrooms and more. The Amp is designed to provide a consistent and evenly distributed downward light, illuminating the surrounding area with an inviting glow.

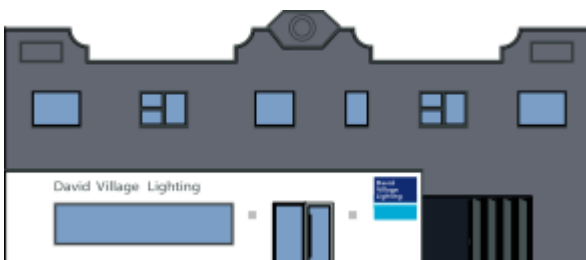
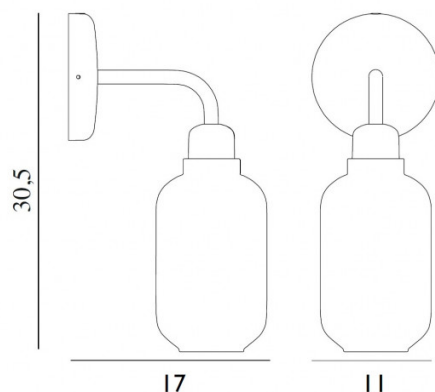
### PRODUCT SPECIFICATION

**Light Source:** 1x Max 2W, E14 LED (Excluded)

**IP Code:** 20

**Dimming:** Integrated on/off switch on the product

**Dimensions:** Depth: 17cm  
Diameter: Ø 11cm  
Height: 30.5cm



**For all sales and technical enquiries, please contact:**

+44 (0)114 263 4266

[info@davidvillagelighting.co.uk](mailto:info@davidvillagelighting.co.uk)

[www.davidvillagelighting.co.uk](http://www.davidvillagelighting.co.uk)