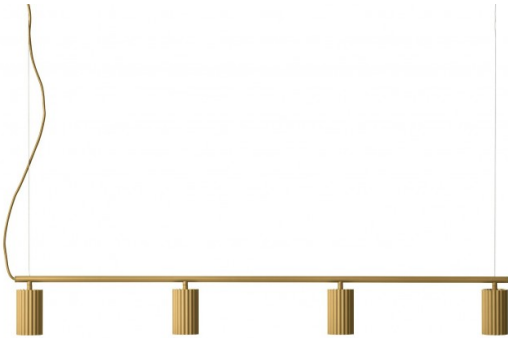


pholc

Pholc Donna Line 120 Pendant

LA10562/120

SOURCE: <https://www.davidvillagelighting.co.uk/product/Pholc-Donna-Line-120-Pendant/10000449>



PRODUCT DESCRIPTION

Designer: Nina Jobs & Stina Sandwall

Donna Line 120 Pendant Light by Pholc

Designed by Nina Jobs & Stina Sandwall as part of the [Pholc Donna collection](#), the Donna Line 120 suspension brings the shape of the [Donna 7 pendant](#) on a large scale for effective illumination. The designers were inspired by fabrics used in high fashion, determined to translate this aesthetic to a hard material such as metal. Achieving this goal, this pendant light features four gorgeous lampshades that look pleated in nature for a minimalist and modern look.

The Donna Line 120 pendant lamp emits a downward light that is perfect for hanging over tables and surfaces, particularly kitchen islands and dining area tables. The pendant light is available in four stunning colours, black ink, autumn leaves, blush and linen which add a subtle and sophisticated touch to any interior. Use in homes or professional spaces for a contemporary lighting solution.

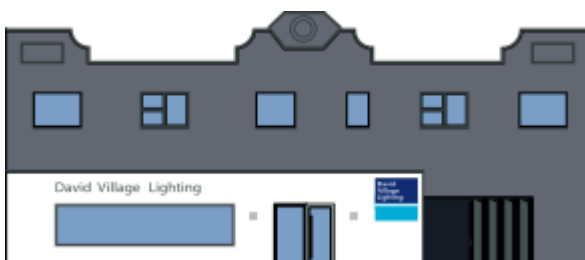
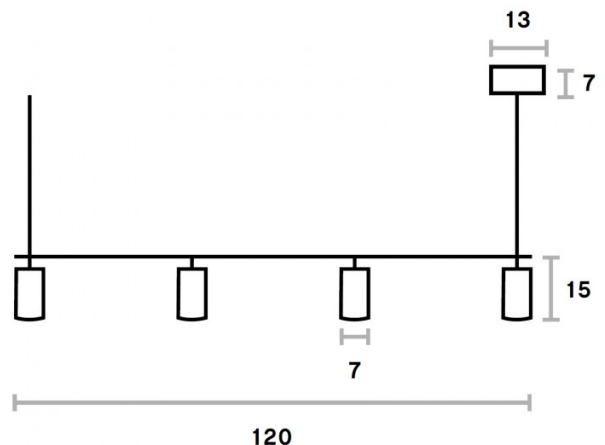
PRODUCT SPECIFICATION

Light Source: 4 x Max 7W GU10 (excluded)

IP Code: 20

Dimming: Dimmable via mains phase dimming.

Dimensions: Shade: Ø7cm
Shade Height: 15cm
Length: 120cm
Ceiling Canopy: Ø13cm
Cable Length: 300cm



For all sales and technical enquiries, please contact:

+44 (0)114 263 4266

info@davidvillagelighting.co.uk

www.davidvillagelighting.co.uk