

**louis poulsen**

# Louis Poulsen VL Studio Floor/Table Lamp

**LA10018/SFT**

SOURCE: <https://www.davidvillagelighting.co.uk/product/Louis-Poulsen-VL-Studio-FloorTable-Lamp/10000399>

## PRODUCT DESCRIPTION

**Designer:** Vilhelm Lauritzen

### VL Studio Table and Floor Lamp by Louis Poulsen

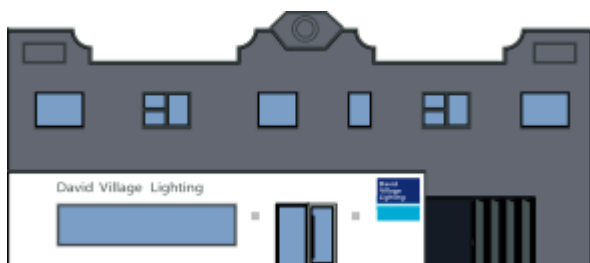
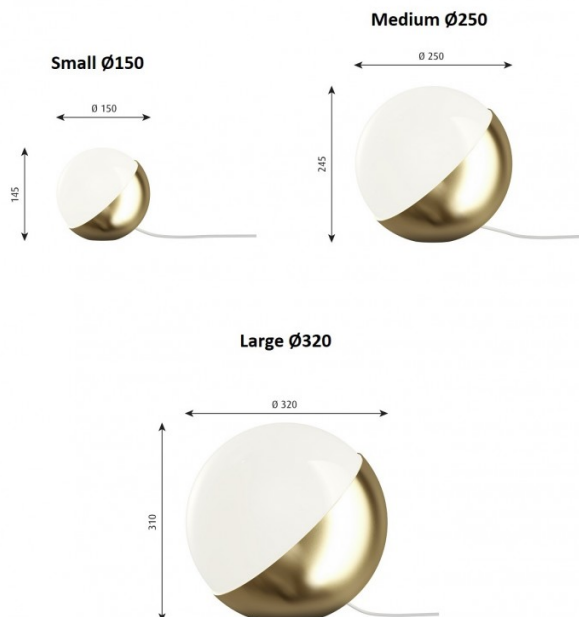
The VL Studio table/floor lamp is part of the [Louis Poulsen VL collection](#), designed by Vilhelm Lauritzen. The range was originally created by Lauritzen for the Radiohuset, the Copenhagen headquarters of the Danish Broadcasting Corporation which he designed from the inside out. Featuring a simplistic silhouette, the VL Studio floor/table light reincorporates the classic design for a gorgeous and stunning lighting solution.

Available in three sizes, the table and floor light can be used on many different surfaces throughout your interior for a clever and intriguing aesthetic. The VL Studio is available in a matt black or brushed brass colour finish and also features an opal glass diffuser which provides a warm and welcoming glow. Use in homes, offices, hospitality or big projects for a modern look with a vintage twist.



## PRODUCT SPECIFICATION

<b>Light Source:</b>	<b>Small Ø150</b> - 1 x Max 3.2W G9 LED (excluded) <b>Medium Ø250</b> - 1 x Max 7.2W E27 LED (excluded) <b>Large Ø320</b> - 1 x Max 11W E27 LED (excluded)
<b>IP Code:</b>	20
<b>Dimming:</b>	<b>Small Ø150</b> - In line on/off switch included on cable <b>Medium Ø250 &amp; Large Ø320</b> - In line dimmer included on cable
<b>Dimensions:</b>	<b>Small Ø150</b> - Ø15cm, Height: 14.5cm <b>Medium Ø250</b> - Ø25cm, Height: 24.5cm <b>Large Ø320</b> - Ø32cm, Height: 31cm



**For all sales and technical enquiries, please contact:**

+44 (0)114 263 4266

[info@davidvillagelighting.co.uk](mailto:info@davidvillagelighting.co.uk)

[www.davidvillagelighting.co.uk](http://www.davidvillagelighting.co.uk)