

marset

Marset Scantling S Table Lamp

LA10246/T

SOURCE: <https://www.davidvillagelighting.co.uk/product/Marset-Scantling-S-Table-Lamp/10000284>



PRODUCT DESCRIPTION

Designer: Mathias Hahn

Marset Scantling S Table Lamp

Wood and metal combine in a design with basic geometric shapes. The Scantling is based on a highly functional and flexible system in which all the movements of the fully rotational shade rely on ball joints and arms to create a versatile, easy-to-move light. With the integrated on/off switch on the diffuser, this light is easily adjusted and can be manipulated in any direction you would like.

The interplay of the different elements used in its design gives this lamp an archetypal, almost graphic appearance. This highlights the wooden feature that is the namesake of the lamp.

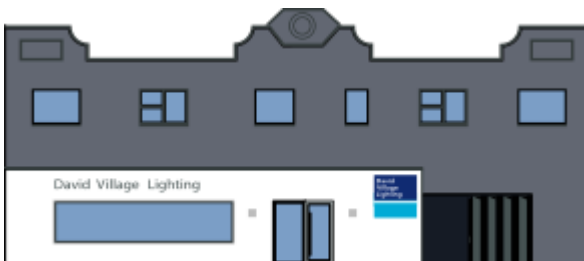
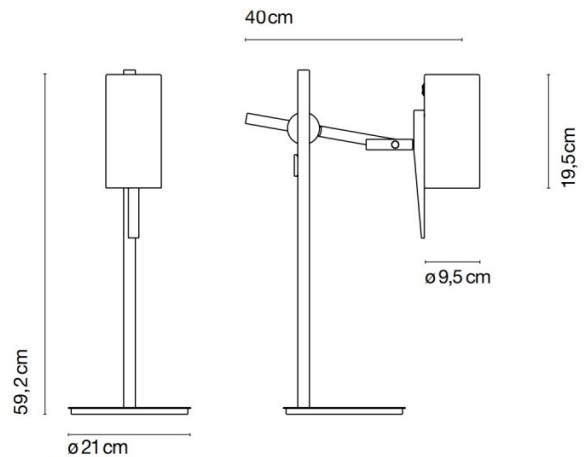
PRODUCT SPECIFICATION

Light Source: 1 x Max 8W E27 LED Reflector (excluded)

IP Code: 20

Dimming: Integrated on/off switch on the product.

Dimensions: Base: Ø21cm
 Height: 59.2cm
 Depth: 40cm
 Shade Length: 19.5cm
 Shade: Ø9.5cm
 Cable Length: 150cm



For all sales and technical enquiries, please contact:

+44 (0)114 263 4266

info@davidvillagelighting.co.uk

www.davidvillagelighting.co.uk