

FLOS

## Flos Oplight LED Wall Light

LA10468

SOURCE: <https://www.davidvillagelighting.co.uk/product/Flos-Oplight-LED-Wall-Light/10000214>

## PRODUCT DESCRIPTION

Designer: Jasper Morrison

## Flos Oplight LED Wall Light

The Flos Oplight Wall Light was designed by Jasper Morrison who wanted to make a light that was simple and makes good atmosphere without being obtrusive or even noticeable. This **sustainable piece of design is fully recyclable**, from the use of material to the packaging it is in. The Oplight design proves that technologically advanced products can be made with **respect for the environment**. The lack of glue in the construction of this sustainable wall light allows you to take part, replace or recycle the Oplight with ease. Every last detail of this light is made as environmentally friendly as possible, from the easy to recycle die-cast aluminium to the solvent free paint and even the production methods are considered in the overall environmental impact.

The light source is housed within the flattened head of the lamp and is made of a board of LEDs which are covered with a clear panel that directs the light out and away from the wall. This LED panel emits a large amount of light compared to the power consumed, with a lifetime of more than 50,000 hours. This **energy efficient LED light source** can also be easily replaced without having to replace the whole wall light.

This Flos wall light is available in two finishes. The designer uses the theory of 'Super Normal' to inspire his designs, this theory discourages 'creative ego' effecting the design process. To avoid this, Jasper Morrison creates simplistic designs that balance noticeability and discretion. This could be said about the inspiration behind this design which was the [Flos Glo-Ball](#) that has become an iconic Flos design. The sustainability behind this lighting design and Morrison's desire for 'super normal' have created a **future proof** light that is destined to last a long time.



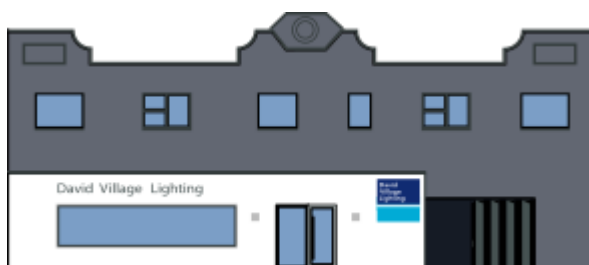
## PRODUCT SPECIFICATION

**Light Source:** 16W 2700K 1290 Lumens

**IP Code:** 20

**Dimming:** Dimmable via Triac dimming.

**Dimensions:** 9.5cm height  
22.2cm length  
19.3cm depth



**For all sales and technical enquiries, please contact:**

+44 (0)114 263 4266

[info@davidvillagelighting.co.uk](mailto:info@davidvillagelighting.co.uk)

[www.davidvillagelighting.co.uk](http://www.davidvillagelighting.co.uk)