

louis poulsen

Louis Poulsen Albertslund Outdoor Wall Light

LA10458

SOURCE: <https://www.davidvillagelighting.co.uk/product/Louis-Poulsen-Albertslund-Outdoor-Wall-Light/10000204>

PRODUCT DESCRIPTION

Albertslund Outdoor Wall Light by Louis Poulsen

The Albertslund wall light was originally designed by Jens Møller-Jensen in 1963 for a residential project in Albertslund, Denmark. Still relevant today, this wall light can be used in a wide variety of outdoor settings to provide much needed illumination. The wall lamp is characterised by a metal structure which holds a clear glass lampshade that slightly exposes the light source. The shade also has an anti glare ring so that the light is nicely diffused.

The Albertslund wall lamp is available in 2 sizes, short or long, and in 3 colour finishes, galvanised aluminium, white or grey. You can use in gardens, patios, terraces or even as as welcome home light for a stylish and vintage touch.

The Albertslund outdoor wall lamp is also available to purchase with part frosted glass instead of clear glass. Please [contact us](#) for more info and prices.



PRODUCT SPECIFICATION

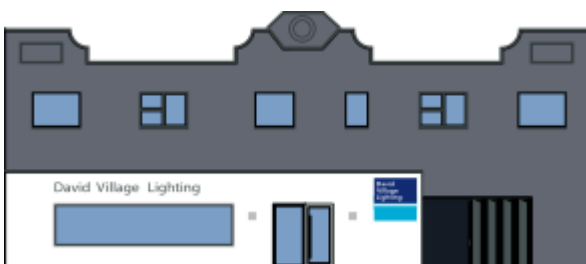
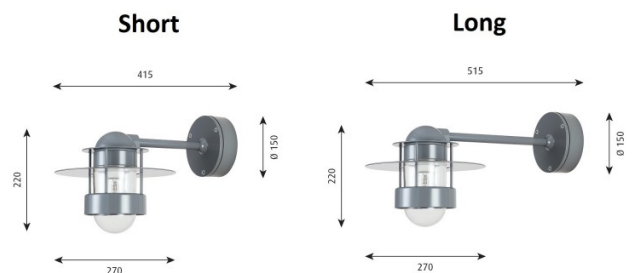
Light Source: 1 x Max 11W E27 LED (excluded)

IP Code: 44

Dimming: Non-dimmable.

Dimensions: Short:
 Shade: Ø27cm
 Shade Height: 22cm
 Depth: 41.5cm
 Wall Base: Ø15cm

Long:
 Shade: Ø27cm
 Shade Height: 22cm
 Depth: 51.5cm
 Wall Base: Ø15cm



For all sales and technical enquiries, please contact:

+44 (0)114 263 4266

info@davidvillagelighting.co.uk

www.davidvillagelighting.co.uk