

BERT | FRANK

Bert Frank Farol Double Wall Light

LA10434/DW

SOURCE: <https://www.davidvillagelighting.co.uk/product/Bert-Frank-Farol-Double-Wall-Light/10000150>



PRODUCT DESCRIPTION

Farol Double Wall Light by Bert Frank

The Farol Double wall lamp is made up of four beautiful cylindrical lampshades that are made out of glass. They sit on the end of bronzed brass rods, having a simple and clean silhouette that is sophisticated and elegant. The aesthetic looks like a modern day wall torch, a contemporary update on a classic and historic lighting staple.

The Farol Double wall light is available in either a left-hand or right-hand version and with the choice of either smoked glass or opal glass shades. The smoked glass exposes the light bulb for a modern look whereas the opal glass conceals the light bulb for a diffused glow which is slightly more traditional. Stunning and gorgeous, this wall lamp can be used in a wide variety of settings.

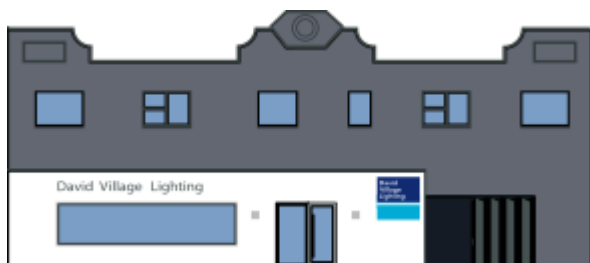
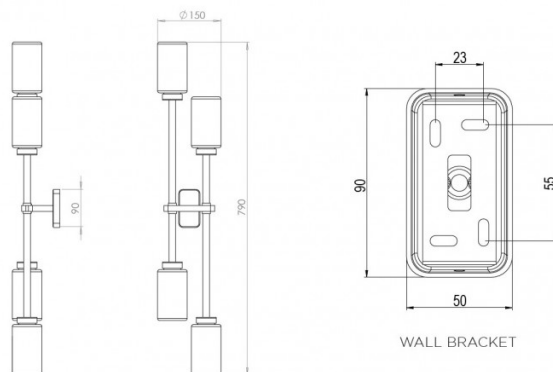
PRODUCT SPECIFICATION

Light Source: 4 x Max 4W G9 LED (included)

IP Code: 20

Dimming: Dimmable via mains phase dimming.

Dimensions: Shade: Ø7cm
Width: 15cm
Height: 79cm
Wall Base Height: 9cm
Wall Base Width: 5cm



For all sales and technical enquiries, please contact:

+44 (0)114 263 4266

info@davidvillagelighting.co.uk

www.davidvillagelighting.co.uk