



Bert Frank Farol Pendant

LA10434

SOURCE: <https://www.davidvillagelighting.co.uk/product/Bert-Frank-Farol-Pendant/10000146>



PRODUCT DESCRIPTION

Farol Pendant Light by Bert Frank

A simple and sophisticated light, the Farol pendant is a truly versatile fixture, being useful in many settings due to its uncomplicated design. The lampshade is made from glass which is suspended from a bronzed brass rod, having clean lines that are subtle and elegant. The shade is available in either an opal or smoked finish, with the opal creating a more diffused glow that conceals the light bulb and the smoked exposing the light bulb for a more contemporary look.

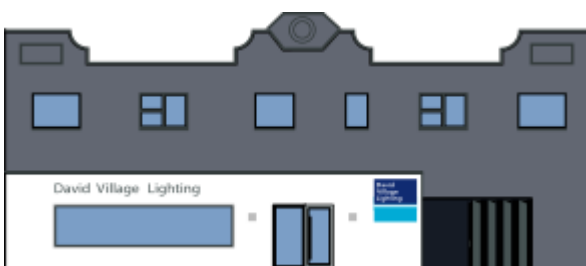
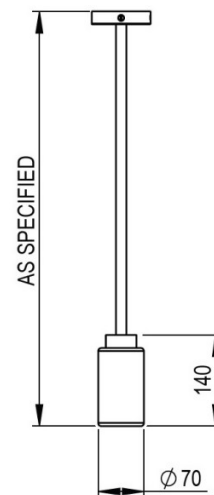
The Farol pendant lamp is especially useful when used in multiple due to its small size and ease of use. You can hang above tables or surfaces or use as an accent light in a dark corner. Suitable for homes and commercial spaces, the Farol pendant light will add a touch of refinement and finesse to any interior.

The drop rod that holds the glass shade is customisable and has to be ordered with a specified length. Please [contact us](#) for more info and to order.

PRODUCT SPECIFICATION

- Light Source:** 1 x Max 4W G9 LED (included)
- IP Code:** 20
- Dimming:** Dimmable via mains phase dimming.
- Dimensions:** Shade: Ø7cm
Shade Height: 14cm
Ceiling Canopy: Ø11.6cm

Customised drop rod



For all sales and technical enquiries, please contact:

+44 (0)114 263 4266

info@davidvillagelighting.co.uk

www.davidvillagelighting.co.uk