



LA10442

Tom Dixon Press Cone LED Pendant

SOURCE: <https://www.davidvillagelighting.co.uk/product/Tom-Dixon-Press-Cone-LED-Pendant/10000137>



PRODUCT DESCRIPTION

Designer: Tom Dixon

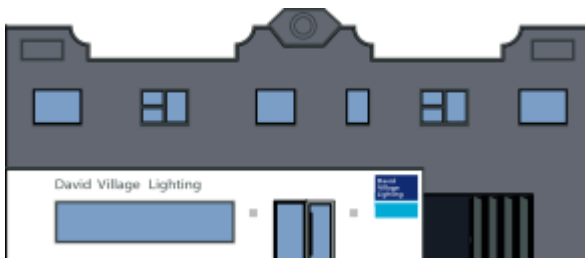
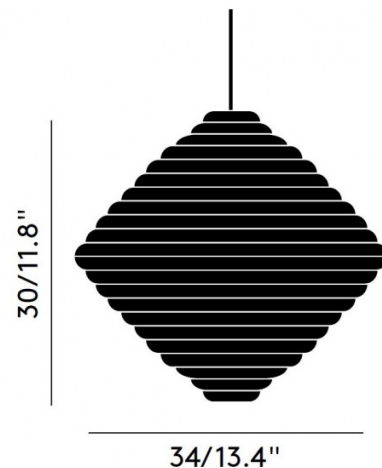
Press Cone LED Pendant Light by Tom Dixon

The Press Cone pendant is part of the Tom Dixon Press collection, a range that is created by dropping molten glass at 1200°C which is then pressed in iron moulds under immense pressure. This results in a beautiful yet durable glass lampshade which features ribbons that diffuse the light source and creates linear patterns in its surroundings.

The Press Cone pendant lamp is named aptly due to its silhouette that is reminiscent of children's toys. The pendant can be used in a wide range of settings, being useful to create a welcoming ambience and to use as a feature light. You can also match the pendant light with others from the collection to create a seamless light scheme throughout your interior.

PRODUCT SPECIFICATION

Light Source: 6W, 3000K, 775 Lumens
IP Code: 20
Dimming: Dimmable via mains phase dimming.
Dimensions: Ø34cm
 Shade Height: 30cm
 Ceiling Canopy: Ø14.5cm
 Cable Length: 250cm



For all sales and technical enquiries, please contact:

+44 (0)114 263 4266

info@davidvillagelighting.co.uk

www.davidvillagelighting.co.uk