

ANGLEPOISE®

Anglepoise + Margaret Howell Type 75 Mini Wall Light

LA3192/MH

SOURCE: <https://www.davidvillagelighting.co.uk/product/Anglepoise-Margaret-Howell-Type-75-Mini-Wall-Light/10000020>

PRODUCT DESCRIPTION

Designer: Sir Kenneth Grange & Margaret Howell

Margaret Howell Type 75 Mini Wall Light by Anglepoise

A 2021 release as part of the [Anglepoise Type 75 collection](#), Margaret Howell again collaborates with the brand to bring the Type 75 mini wall light in her bespoke, exclusive colours. Margaret Howell is a well-known British clothing designer, putting authenticity, functionality and timelessness at the forefront of her designs.

This ethos perfectly matches the ideology of Anglepoise and so in 2012 Margaret Howell colour-matched an Anglepoise lamp from the 1970s to create the beautiful Sienna colour. Because of this success, she expanded to create the Yellow Ochre and Saxon Blue colours which are applied here to this wall lamp.

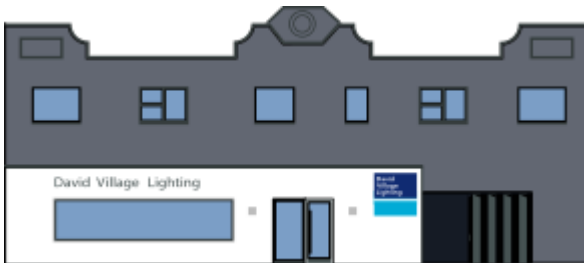
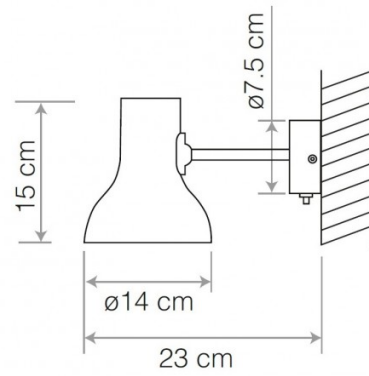
The Type 75 mini wall lamp has flexibility as the user can direct and move the lampshade wherever they need, whether they need a handy reading light or an ambient fixture to line a corridor. With clean lines and an aesthetic that is true to the Anglepoise brand, this wall light is perfect for many settings to add a stylish and chic touch that will endure over many decades.

The Type 75 mini wall comes in 2 versions, available with a cable and plug, to install near a socket, or hard-wired. Please consult an electrician before hard-wiring into the mains electricity.



PRODUCT SPECIFICATION

- Light Source:** 1 x max 10W E27 LED (excluded)
- IP Code:** 20
- Dimming:** **Hard-wired** - Integrated on/off switch on the product
Cable and Plug - In line on/off switch included on cable
- Dimensions:** Ø14cm shade
15cm shade height
23cm max. reach
Ø7.5cm wall base
250cm cable length



For all sales and technical enquiries, please contact:

+44 (0)114 263 4266

info@davidvillagelighting.co.uk

www.davidvillagelighting.co.uk