

moooi

Moooi Raimond II LED Pendant

LA10404

SOURCE: <https://www.davidvillagelighting.co.uk/product/Moooi-Raimond-II-LED-Pendant/10000015>

PRODUCT DESCRIPTION

Designer: Raimond Puts**Raimond II LED Pendant Light by Moooi**

The Raimond II pendant light is the updated version of the Raimond pendant which was released in 2009. The pendant is inspired by the geodesic dome as the designer, Raimond Puts, was fascinated by its construction and how it could be incorporated into a lighting design. What results is two stainless steel spheres interconnected with integrated LED light sources sitting within the pattern.

Raimond Puts was also intrigued by prime numbers which is the basis of each size of the Raimond II pendant lamp as R43, R61 and R89 are all prime numbers, representing the diameter of each sphere. This pendant light is a beautiful and mesmerising fixture, with the LED lights twinkling like stars in the night sky. Suitable for many interiors, you can use this pendant lamp as a main light in small spaces or in multiple in larger spaces for an atmospheric and warm glow.

The Raimond II LED pendant is also available in larger sizes, the R127, R163 and the R199. Please [contact us](#) for more info.

Please note that these lights are not dimmable via standard mains phase dimming. However, a Moooi wireless dimming switch is available to purchase separately which enables you to dim your Raimond II fitting without the need for additional wiring. The Wireless switch comes with a dimmable module that is fitted inside the ceiling canopy of your Moooi Raimond II. You can then use the switch to dim your Moooi Raimond II. Please [contact us](#) for further information and prices.



PRODUCT SPECIFICATION

Light Source: **R43** - 17W, 2523K, 664 Lumens
R61 - 26W, 2523K, 1134 Lumens
R89 - 40W, 2523K, 1744 Lumens

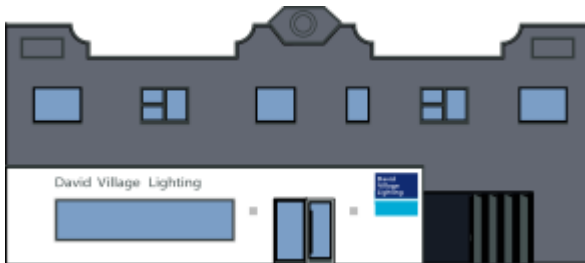
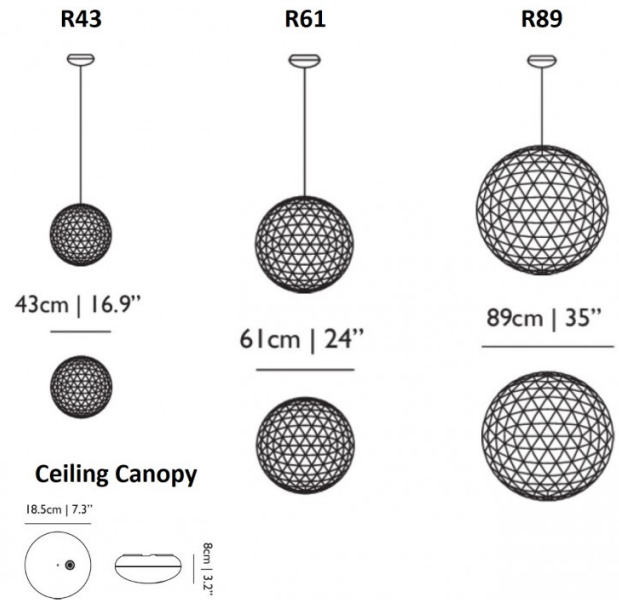
IP Code: 20

Dimming: Dimmable via Dali and Push to make dimming systems. Please consult your electrician, additional wiring may be required on site.

Also dimmable via a Moooi wireless dimming switch, purchased separately. Please contact us.

Dimensions: **R43** - Ø43cm
R61 - Ø61cm
R89 - Ø89cm

Ceiling Canopy: Ø18.5cm
Cable Length: 250cm



For all sales and technical enquiries, please contact:

+44 (0)114 263 4266

info@davidvillagelighting.co.uk

www.davidvillagelighting.co.uk