

# LE KLINT

## Le Klint 306 Table/Wall Light

LA4722

SOURCE: <https://www.davidvillagelighting.co.uk/product/Le-Klint-306-TableWall-Light/17853>



### PRODUCT DESCRIPTION

**Designer:** Kaare Klint

### Model 306 by Le Klint

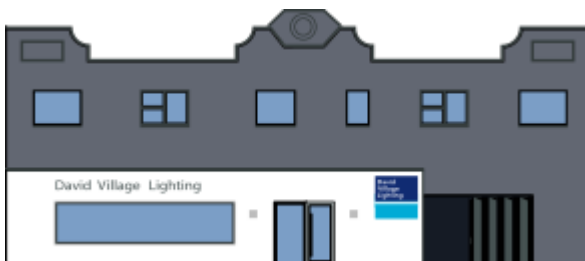
A versatile, multi-use lamp that was designed by Kaare Klint back in 1945. The Le Klint 306 lamp can be used both as a table lamp or a wall light and can be converted depending on how you wish to use it.

### PRODUCT SPECIFICATION

**Light Source:** 1 x E27 40W max (excluded)

**IP Code:** 20

**Dimensions:** Ø35cm shade  
41cm height



**For all sales and technical enquiries, please contact:**

+44 (0)114 263 4266

[info@davidvillagelighting.co.uk](mailto:info@davidvillagelighting.co.uk)

[www.davidvillagelighting.co.uk](http://www.davidvillagelighting.co.uk)