

FontanaArte

LA4324

Fontana Arte Amax Pendant Light

SOURCE: <https://www.davidvillagelighting.co.uk/product/Fontana-Arte-Amax-Pendant-Light/17163>



PRODUCT DESCRIPTION

Designer: Charles Williams

Fontana Arte Amax 82 Pendant Light

Designed in 2003 by Charles Williams, the Fontana Arte Amax 82 pendant light is a simple and sophisticated suspension available in a range of sizes to suit a variety of interior spaces both residentially and commercially. The smaller versions starting at 32cm suits smaller residential spaces while the larger impressive sizes starting at 82cm, provide a grand lighting statement for larger spaces.

With a classic conical diffuser in polyethylene, the Fontana Arte Amax 82 pendant light provides a warm ambient glow, and the two largest sizes can be equipped with a closing disc in methacrylate with suspension rod and fixing plug, to further diffuse the light and remove glare. For further details, pricing and orders please [contact us](#).

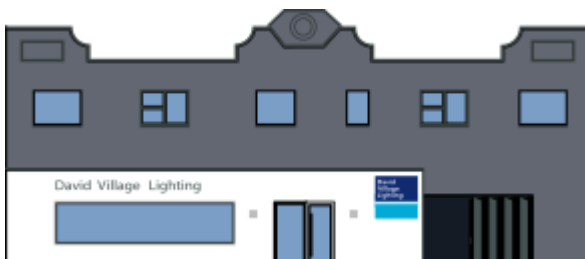
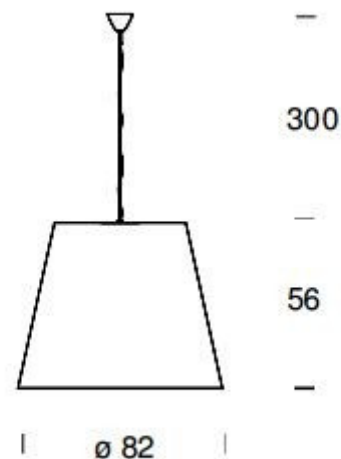
PRODUCT SPECIFICATION

Light Source: Small: 1x LED E27 14W max. (excluded)
Medium: 1x LED E27 21W max. (excluded)
Large: 3x LED E27 14W max. (excluded)
Extra Large: 3x LED E27 21W max. (excluded)

IP Code: 20

Dimming: Dimmable via mains phase dimming.

Dimensions: Small: H 29cm W 32cm
Medium: H 44cm W 47cm
Large: H 66cm W 82cm
Extra Large: H 88cm W 109cm
Cable length: 300cm



For all sales and technical enquiries, please contact:

+44 (0)114 263 4266

info@davidvillagelighting.co.uk

www.davidvillagelighting.co.uk