

**MUUTO**

LA3709

## Muuto Fiber Side Chair - Normal Shell

SOURCE: <https://www.davidvillagelighting.co.uk/product/Muuto-Fiber-Side-Chair---Normal-Shell/16378>

### PRODUCT DESCRIPTION

**Designer:** Iskos-Berlin

### Muuto Fiber Side Chair with Normal Shell

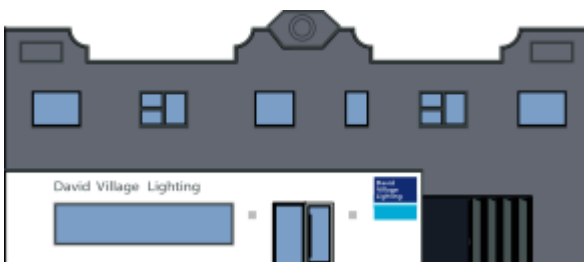
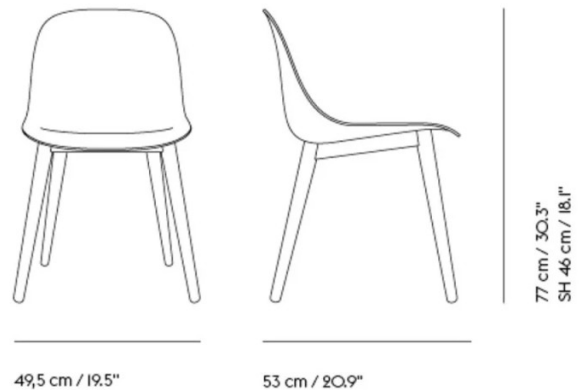
The Fiber Side Chair is part of the [Fiber](#) family, a collection distributed by Muuto and designed by the design team Iskos-Berlin. An esteemed duo that has exhibited worldwide at the likes of MoMa and the Danish Design Museum, Iskos-Berlin have developed a collection that is both innovative and functional.

The side chair is constructed in the same way as the [Fiber Armchair](#) by using a bio-composite material that combines plastic with 25% wood fibres and having a combination of foam and fabric inside the chair to create maximum comfort. With a more streamlined design, the side chair maintains comfort whilst also being smaller and easier to move, making the chair ideal for dining or desk spaces.

For further details on other available styles and finishes please [contact us](#).

### PRODUCT SPECIFICATION

**Dimensions:** Width: 49.5cm  
Depth: 35cm  
Height: 77cm



**For all sales and technical enquiries, please contact:**

+44 (0)114 263 4266

[info@davidvillagelighting.co.uk](mailto:info@davidvillagelighting.co.uk)

[www.davidvillagelighting.co.uk](http://www.davidvillagelighting.co.uk)