

a

by arturo alvarez

LA10905

Arturo Álvarez Mytilus LED Pendant

SOURCE: <https://www.davidvillagelighting.co.uk/product/Arturo-lvarez-Mytilus-LED-Pendant/10001409>



PRODUCT DESCRIPTION

Designer: Arturo Alvarez

Arturo Álvarez Mytilus LED Pendant

Arturo Álvarez Mytilus LED Pendant was created by Arturo Alvarez using his signature steel mesh techniques. The pendants were inspired by the deep ocean floor and its majestic waves that drive the sea currents. The structure of the pendant is based on organic shapes which are formed from flowing waves. The mystery of the ocean is expressed through this pendant with its mesh exterior and the way the light pierces through from the centre.

Mytilus pendant is available in two sizes: medium and large. The structure is made from galvanised painted mesh which is folded over and appears as if the frame is holding the LED light source.

PRODUCT SPECIFICATION

Light Source: Medium

8W, 2700K, 960 Lumens

Large

8W, 2700K, 960 Lumens

IP Code: 20

Dimming: Dimmable via mains phase dimming

Dimensions: Medium

Height: 17cm

Width: 59cm

Diameter: Ø 48cm

Cable Length: 133cm

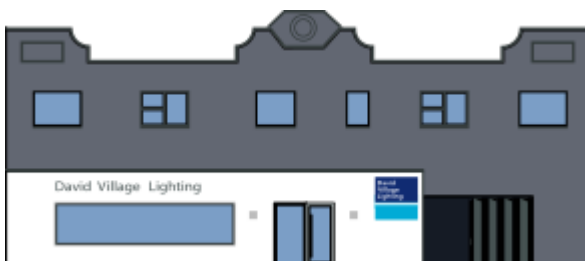
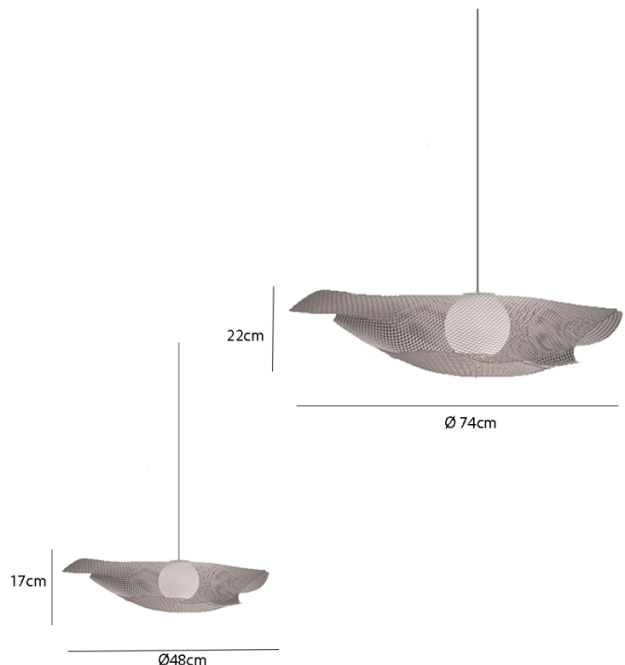
Large

Height: 22cm

Width: 90cm

Diameter: Ø 74cm

Cable Length: 128cm



For all sales and technical enquiries, please contact:

+44 (0)114 263 4266

info@davidvillagelighting.co.uk

www.davidvillagelighting.co.uk