

VIBIA

LA10565

Vibia Plusminus LED Lighting System

SOURCE: <https://www.davidvillagelighting.co.uk/product/Vibia-Plusminus-LED-Lighting-System/10000458>

PRODUCT DESCRIPTION

Designer: Stefan Diez

Vibia Plusminus LED Lighting System

The Plusminus collection by Vibia was designed with functionality in mind. This 'less is more' design features a conductive textile ribbon that carries the electricity to the multiple luminaires that you can click and connect along with the ribbon. The Vibia Plusminus is a design that fits any space, from an intricate architectural space to a simple area of your home in need of a designer touch. This sustainable collection by Vibia allows you to create or enhance a space using a completely unique configuration of ribbon along with various luminaire options.

The ribbon and shades are available in a variety of colours and sizes, from a small diffused spotlight to a Ø80cm cone pendant light, the options are endless! There are also various electrical connection options to choose from that will suit your home or workspace perfectly. These options will affect the possible dimming methods available to you, however, the Plusminus can be dimmed using an array of methods ranging from a simple on/off switch, or even a Casambi dimming system. This wide range of choices allows you to create the ideal configuration for your space.

This limitless design only requires one electrical connection per 30-meter ribbon which can supply up to 180W of charge that allows you to place a large number of luminaires on one ribbon. There are various ribbon termination options as well as being able to connect another 30-meter ribbon allowing you to extend your Plusminus even further! Vibia will also supply you with an accessories toolbox with extra units for on-site adjustment, this makes the installation and configuration of the Plusminus completely personalised and unique.

For more information about pricing and configuration, please [contact us](#).



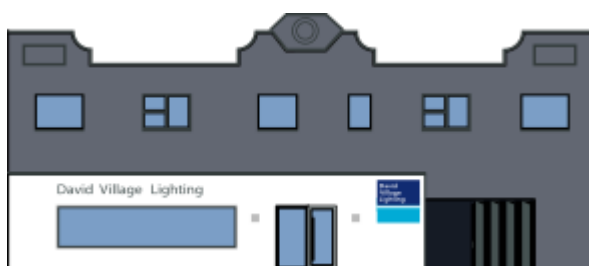
PRODUCT SPECIFICATION

Light Source: Available in 2700K, 3000K or 3500K colour temperature. Wattage and lumen output varies by luminaire type.

IP Code: 20

Dimming: Multiple dimming options including on/off, DALI, Push, 1-10V or Casambi. Please consult your electrician, additional wiring may be required on site.

Dimensions: **Sphere:** Ø20cm, H:21cm or Ø30cm, H:31cm
Semisphere: Ø20cm, H:13cm or Ø30cm, H:21cm
Cone: Ø60cm, H:15cm or Ø80cm, H:22cm
Spotlight: Ø10cm, H:11cm [beam angle options]
Linear: 102cm, H:4cm or 202cm, H:4cm
Linear Low UGR: 26.8cm, 7cm or 52.5cm, 7 cm or 103.7cm, 7cm
30m max belt length



For all sales and technical enquiries, please contact:

+44 (0)114 263 4266

info@davidvillagelighting.co.uk

www.davidvillagelighting.co.uk