



## Buster + Punch 4G Toggle Switch

LA10430/4G

SOURCE: <https://www.davidvillagelighting.co.uk/product/Buster-Punch-4G-Toggle-Switch/10000117>

### PRODUCT DESCRIPTION

#### 4G Toggle Switch by Buster and Punch

Suitable for controlling 4 light sources or points, the 4G toggle switch was created by Buster + Punch. The toggle switch can be used alongside many of their lights in the collection as the aesthetic matches the modern and chic style of the range. The toggle is made from either brass, steel or metal and has a cross knurl pattern held by a metal wall plate and colour-matched coin screws. The top-quality nature of the switch makes it the perfect choice for many interiors and has 12 colour finishes available for versatility.

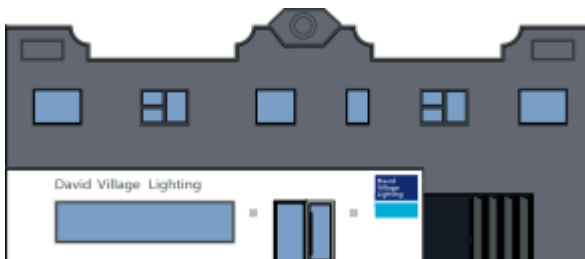
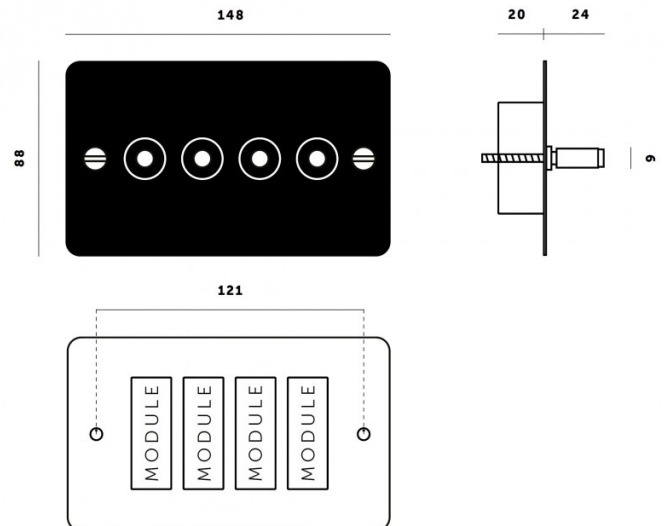


### PRODUCT SPECIFICATION

**Dimming:** Quadruple Switch, 2-way, 10AX, 240V

**Dimensions:** Toggle: Ø6mm  
Height: 8.8cm  
Width: 14.8cm  
Depth: 2.4cm

**Recommended Back Box:**  
2G square back box - 47mm depth



For all sales and technical enquiries, please contact:

+44 (0)114 263 4266

[info@davidvillagelighting.co.uk](mailto:info@davidvillagelighting.co.uk)

[www.davidvillagelighting.co.uk](http://www.davidvillagelighting.co.uk)