



LA10404/Z

## Moooi Raimond II Zafu LED Pendant

SOURCE: <https://www.davidvillagelighting.co.uk/product/Moooi-Raimond-II-Zafu-LED-Pendant/10000018>

### PRODUCT DESCRIPTION

**Designer:** Raimond Pots

### Raimond II Zafu LED Pendant Light by Moooi

Designed by Raimond Pots, the Raimond II Zafu suspension light is part of Moooi's lighting collection. Raimond spent years experimenting with material and shapes, fascinated by the geodesic dome and prime numbers. His designs progressively became more refined and combined with the innovation in LED techniques, Pots discovered the perfect, most productive combination. His design for the original Raimond Lights won the Sanoma Woon Award in 2010, for best Woonproduct.

The Raimond II lights reflect all this, with their geometric shape and dimensions that tend to be primary numbers. Small LED units are scattered across the stainless steel frame, emitting a warm and even ambience in every direction. The Raimond II Zafu has an elliptical shape and brings the starry night sky into your home, or business, or office. As with all suspensions of the [Moooi Raimond II collection](#), the Raimond Zafu light is dimmable using Dali systems.

Moooi suggests that all Raimond II pendants have a companion, and therefore should be installed in clusters. Browse through the entire Raimond II range, available in different shapes and sizes but made with the same material and mathematical elements. A Raimond II pendant light not only brings light into any interior, but becomes an decorative piece even when not in use.

**Please note** that this light is not dimmable via standard mains phase dimming. However, a Moooi wireless dimming switch is available to purchase separately which enables you to dim your Raimond II fitting without the need for additional wiring. The Wireless switch comes with a dimmable module that is fitted inside the ceiling canopy of your Moooi Raimond II. You can then use the switch to dim your Moooi Raimond II. Please [contact us](#) for further information and prices.



## PRODUCT SPECIFICATION

**Light Source:** 26W, 2523K, 1062 Lumens

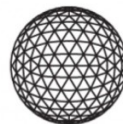
**IP Code:** 20

**Dimming:** Dimmable via Dali and Push to make dimming systems. Please consult your electrician, additional wiring may be required on site.

Also dimmable via a Moooi wireless dimming switch, purchased separately. Please contact us.

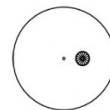
**Dimensions:** Shade: Ø75cm  
Shade Height: 30cm  
Ceiling Canopy: Ø18.5cm  
Cable Length: 250cm

75 cm | 29.5"

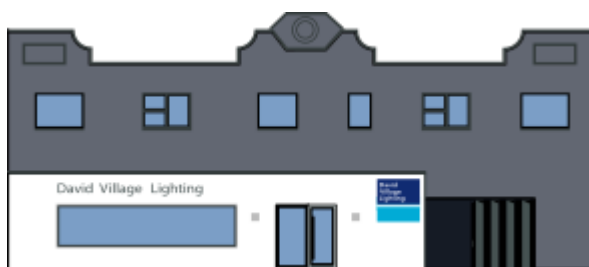


30cm | 12"

18.5cm | 7.3"



8cm | 3.2"



**For all sales and technical enquiries, please contact:**

+44 (0)114 263 4266

[info@davidvillagelighting.co.uk](mailto:info@davidvillagelighting.co.uk)

[www.davidvillagelighting.co.uk](http://www.davidvillagelighting.co.uk)